



Please ensure that all components listed below are accounted for before beginning installation:

SIDE MUFFLER MOUNTS

- (4) M8-1.25X25MM Bolts
- (2) M8- 1.25x20MM Bolts
- (6) M8-1.25 Locking Nuts
- (12) M8 Flat Washers
- (4) 1/4" Aluminum Spacers

CENTER MUFFLER MOUNTS

- (4) 60 Duro Red Urethane Washers
- (2) M8-1.25 Locking Nuts
- (2) M8 Flat Washers

OVER AXLE FLANGES

- (10) M8-1.25X30MM Bolts
- (10) M8-1.25 Locking Nuts
- (20) M8 Flat Washers

VACUUM LINES

- (2) Vacuum Line Adaptors
- (2) 6" Long Vacuum Line
- (6) Zip Ties

EXHAUST TIPS (IF PURCHASED)

- (2) Tips with tip rings
- (2) 63.5mm AccuSeal Clamps

Packing Sign Off _____

Shipped on ____ / ____ / ____



Step 1: Using an E12 inverted Torx bit loosen the bolts from the factory tips and remove them. Optionally you may wrap the exhaust tips in painters tape to prevent any scratches at any point.

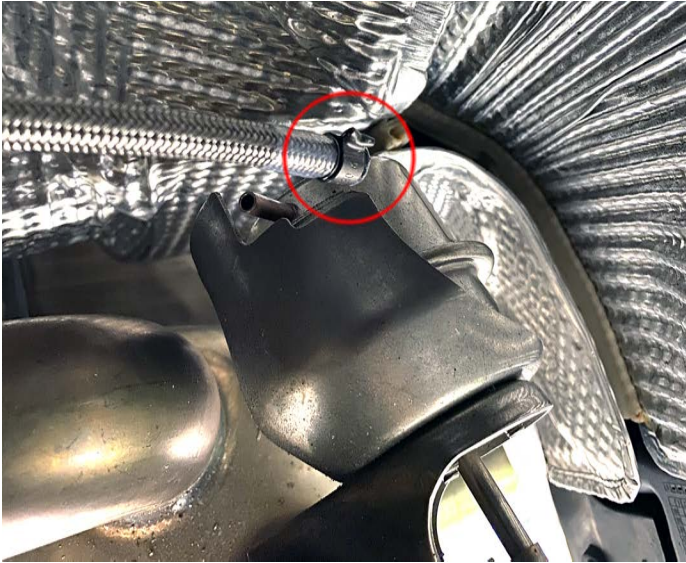


Step 2: Using a T25 Torx bit remove the 6 Torx bolts from the center diffuser and then remove from car.

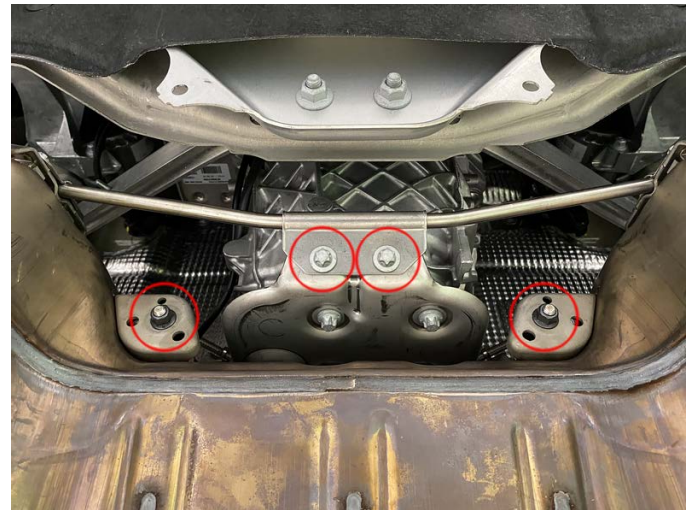
Step 3: Loosen and remove the 12mm nuts from the particulate filter to muffler flange on both sides. **You might end up removing a stud with a nut - we include new bolts and nuts should you need / want to use them in this case or use all new hardware.**



Step 4: Pull off factory vacuum lines from both exhaust valves

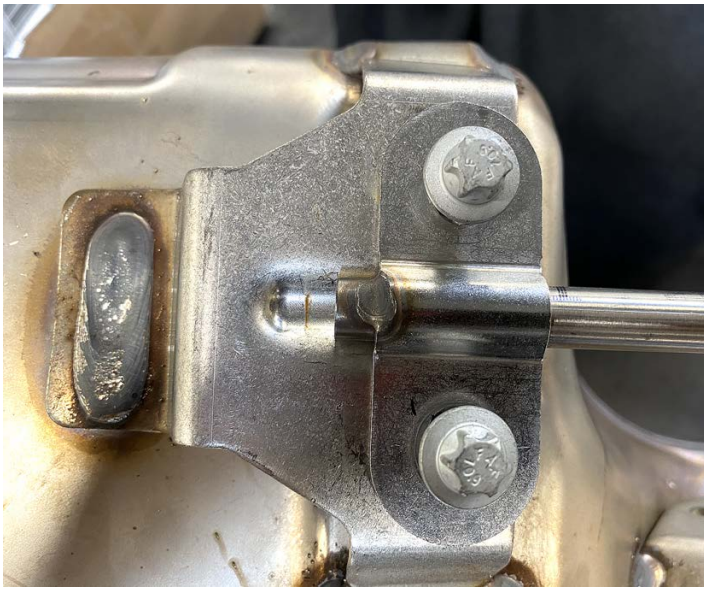


Step 5: Remove two E12 Torx nuts holding the exhaust brace to the vehicle and then the 12mm nuts from the support rods on either side.

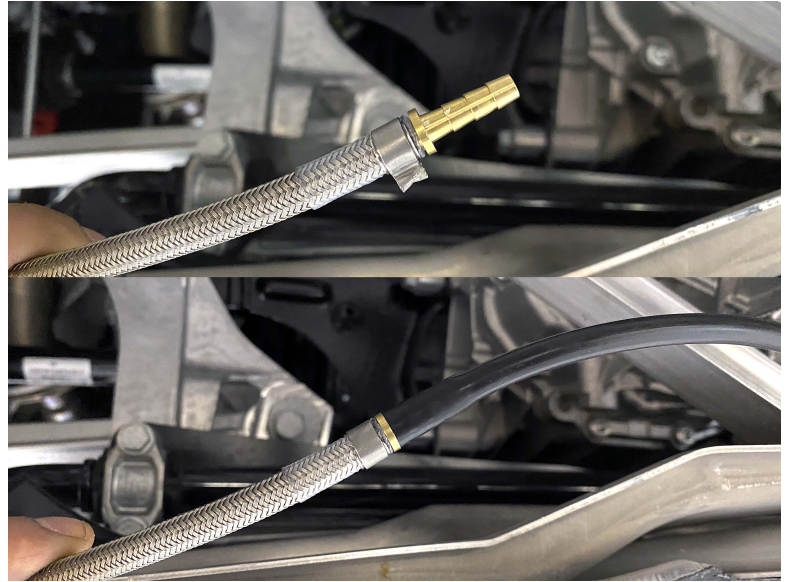


Step 6: Carefully remove the factory exhaust from the vehicle. Inspect the condition of your factory gaskets - if they are undamaged they can be reused later.





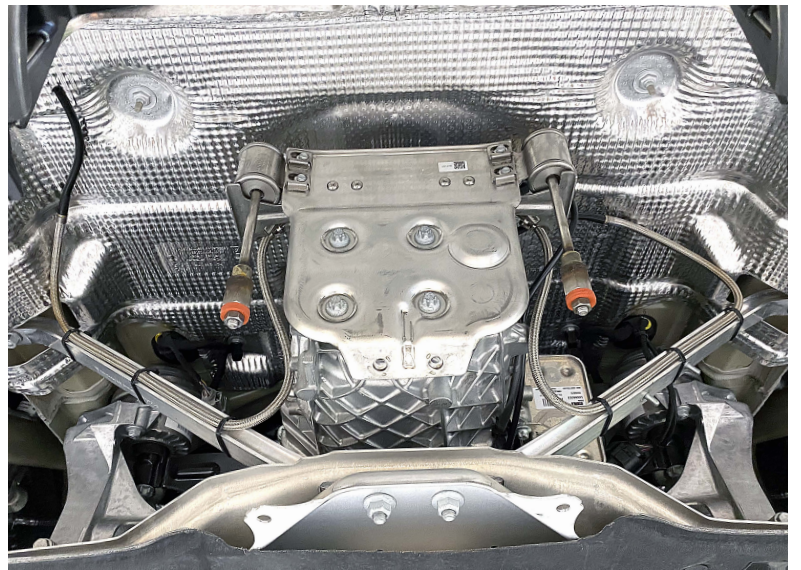
Step 7: Using an E10 Torx bit remove the factory brace from the rear of the factory muffler. Put off on the side to reuse later on SOUL exhaust.



Step 8: Use the supplied vacuum line barbs and place one in each factory vacuum line. Plug in the supplied vacuum lines into the barbs on both sides.



Step 9: Route the stock vacuum lines by zip tying them to the rail braces as shown.

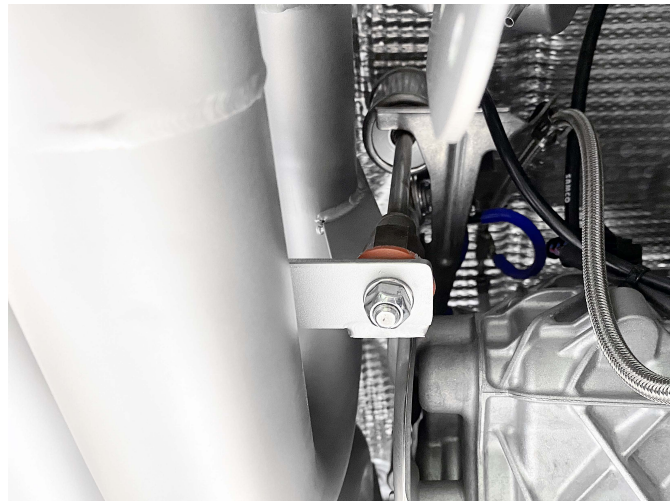


Step 10: Insert the supplied rubber washers on to the muffer mount rods on both sides as shown.



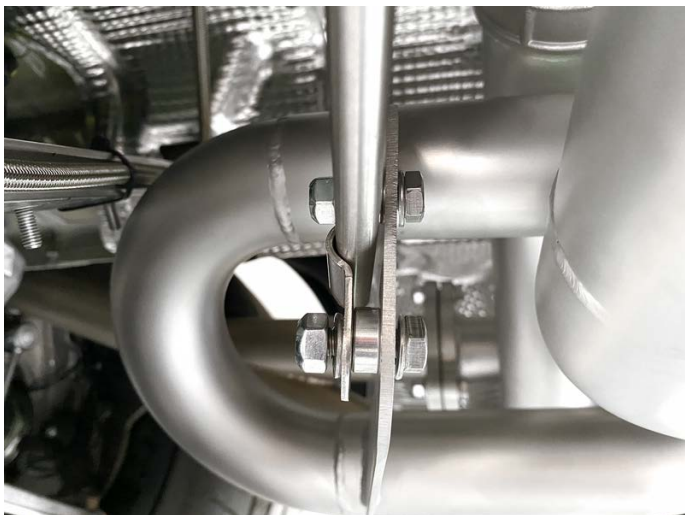
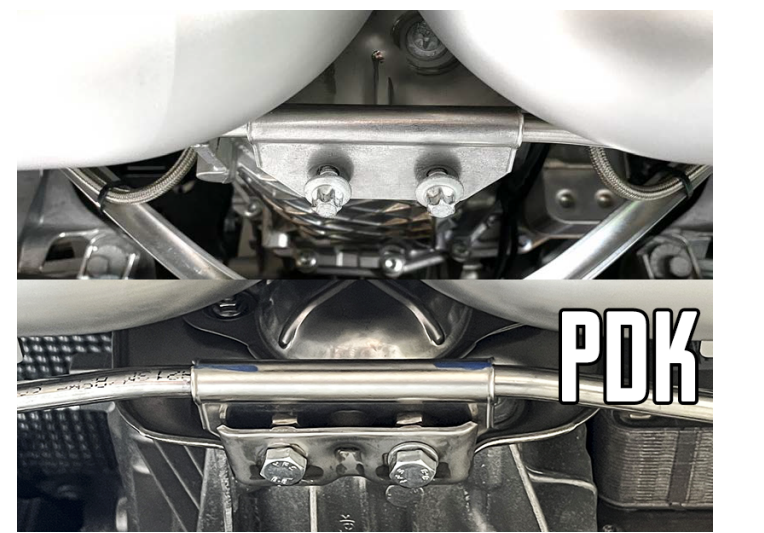
Step 11: Install full exhaust onto the car. Make sure you have the gaskets in place on the over axle pipes. You may need or decide to use the included bolts and nuts in place of the factory studs to attach the SOUL exhaust to the over axle pipes.

Step 12: If using stock particulate filters hand tighten the 12mm nuts to the studs. If you're using SOUL / aftermarket over axle pipes use the included hardware and hand tighten the 13mm bolt and nuts from the SOUL exhaust to the over axle pipes.



Step 13: Tighten the muffler mount rod nuts using a 13mm socket.

Step 14: Reattach the muffler brace bracket that was removed from stock muffler. Cars with PDK may need to mount the bracket on TOP of the captive nuts with included 20mm bolts, washers, and nuts. First thread bolts with washers in and then install nut and washers over top of bracket.



Step 15: Attach the other mounting locations to the SOUL muffler with included hardware and aluminum spacers. (13mm socket and wrench)

Step 16: Torque down muffler to over axle hardware.



Step 17: Plug in the new vacuum lines into the SOUL valve actuator nipples.

Step 18: Reinstall the factory or SOUL exhaust tips onto outlet pipes. Using an E12 inverted Torx bit, tighten the factory tips. If installing SOUL tips a 15mm socket is needed for tightening - we do not have a specific torque rating - tighten down as hard as possible.



Step 19: Wipe down the exhaust and reinstall the factory diffuser.



You have now successfully completed the installation of your new SOUL exhaust components! Thank you for your business and if you have any questions during/after the installation please do not hesitate to call or email at the details below.

! You may find that after your first full heat cycle of the exhaust that you need to re-adjust the tip placement to your liking. Additionally, the tone and sound of your exhaust will likely change as the mufflers get broken in, roughly a thousand miles or so.

! You may notice smoke and fumes coming from the system upon first starting up the vehicle. This is due to oils used in manufacturing and is not a problem. The smell will dissipate in a short period of time after the exhaust has reached normal operating temperature.

SOUL PERFORMANCE PRODUCTS

2300 Maryland Road
Willow Grove, PA 19090
(267) 818-3201
customerservice@soulpp.com