

Please ensure that all components listed below are accounted for before beginning installation:

INCLUDED COMPONENTS

- (1) Driver Side Piping
- (1) Passenger Side Piping
- (1) X-Pipe Section
- (2) 2.5" Clamps
- (2) Two-Bolt Gaskets
- (4) Bolts
- (4) Nuts
- (8) Washers
- (2) Vacuum Caps
- (2) Mikalor 63-68mm Clamps
- (2) Tips
- (2) Swivel Seal 60 Clamps
- (1) Transmission Bracket (with extensions)
- (4) 1/4" Aluminum Spacers
- (4) M8x25mm Bolts
- (4) M8 Nuts
- (8) Washers
- (3) M6x20mm Flanged Bolts (reuse factory nuts)

Packing Sign Off _____

Shipped on ____/____/____



Step 1: Loosen and remove the 13mm flange nuts on both overaxle pipe flanges of the factory exhaust.



Step 2: Remove the PSE vacuum line if your vehicle has the Porsche Sport Exhaust.



Step 3A: Locate the OEM band straps holding up the muffler on the passenger and driver side.



Step 3B: Loosen both driver and passenger straps but do not yet remove the 6mm allen bolt on them.



Step 3C: Each bolt can now be swung free to release band strap. Remove band straps.

Step 4: The muffler is now being supported on these hangers. Lift the muffler and begin to pull towards the rear.



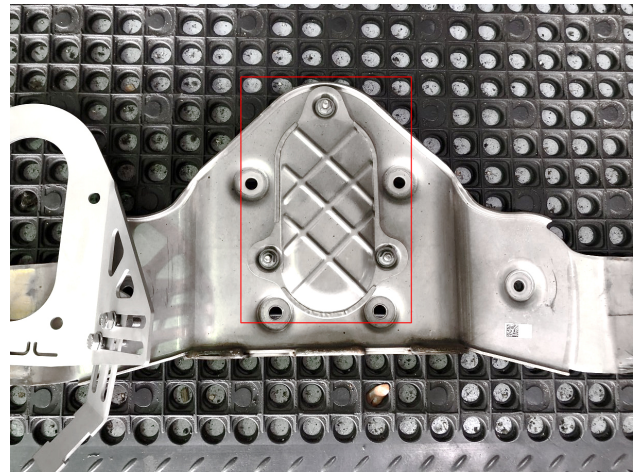


Step 5: The OEM muffler can now be pulled from the vehicle. We recommend two sets of hands or the use of a jack to support the weight of the muffler as it is quite heavy.

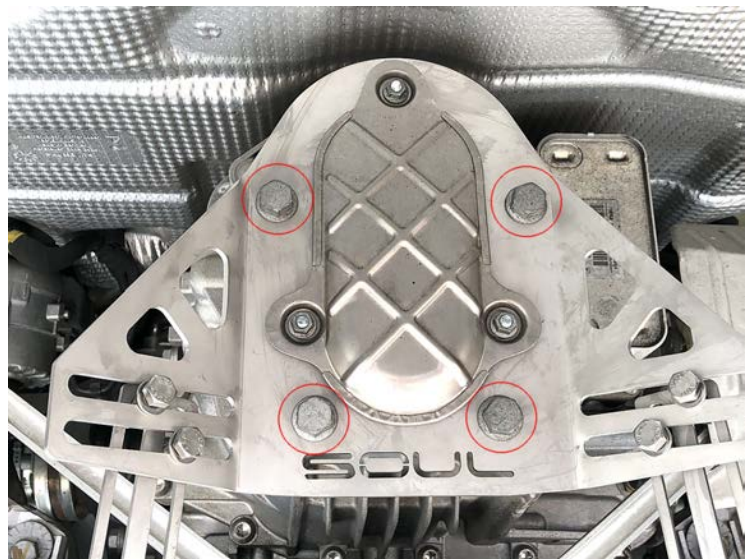


Step 6: Pre assemble the exhaust system off the vehicle. Be sure to keep all the clamps loose. **We recommend not installing the tips until the very end.**

Step 7: Remove factory exhaust mounting bracket and remove the factory heat shield shown from it to reuse on SOUL PDK bracket.



Step 8: Attach the factory heat shield to SOUL PDK bracket with three included bolts, reuse factory nuts.

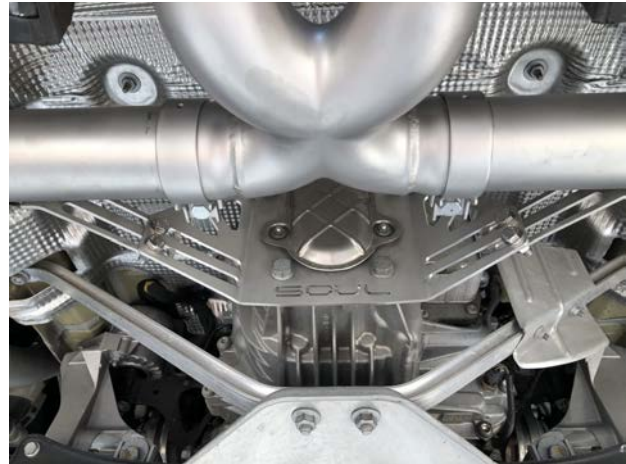


Step 9: Install the SOUL PDK bracket with included 1/4" spacers behind the bracket with included four M8x25mm Bolts. This will space it out away from the transmission evenly. Use included bolts, washers, and nuts to attach bracket arms to the PDK bracket.



Step 10: Lift the system up and install the included exhaust to downpipe gaskets and hardware. We recommend using copper sealant spray on the gasket if you have it available.


Step 11: Attach included Mikalor clamps onto exhaust and loosely affix to PDK bracket arms.




Step 12: Torque down exhaust to header hardware, then the Mikalor clamps from bracket arms to exhaust, and finally the hardware for the PDK bracket arms. Tighten all nuts to 18 ft-lbs minimum and Mikalor clamps to 15 ft-lbs minimum.



Step 13: Attach SOUL tips and position X-pipe and tips to roughly desired position and height. Torque down X-Pipe Accuseal clamps to 40 ft-lbs minimum. Angle tips as desired and torque down tip clamps to minimum of 15-ft lbs.

 You may find that after your first full heat cycle of the exhaust that you need to re-adjust the tip placement to your liking.

 You may notice smoke and fumes coming from the system upon first starting up the vehicle. This is due to oils used in manufacturing and is not a problem. The smell will dissipate in a short period of time after the exhaust has reached normal operating temperature.

Thank you for your business and if you have any questions during/after the installation please do not hesitate to call or email at the details below.

SOUL PERFORMANCE PRODUCTS
2300 Maryland Road
Willow Grove, PA 19090
(267) 818-3201
customerservice@soulpp.com

SOUL
PERFORMANCE PRODUCTS