

Disclaimer: This installation guide is intended to clarify the installation of your new Soul Performance Products exhaust. **Please review this guide in full before beginning installation.** Please take proper precautions and safety measures when working on your vehicle and perform this work at your own risk



Exhaust Components

- o (1) Left Muffler
- o (1) Right Muffler
- o (2) Exhaust Tips
- o (1) Outlet X-Pipe

Valves

- o (1) Valve Controller Kit

Hardware/Gaskets/Clamps

- o (2) Two-Bolt Gaskets
- o (2) Clamps
- o (4) M10 Bolts
- o (8) Flat Washers
- o (4) M10 Nuts
- o (2) Swivel Seal 60 Clamps *(for single wall tips only)*

Valve Operation Check _____

Packing Sign Off _____

Shipped on ___/___/___

Start by raising your car and removing the rear wheels. Remove the tire shield from the fender wells on both sides (two 10mm nuts and one T-25 Torx Bolt).





Pictured Left: Remove factory mounting hardware from the header/muffler flanges on both sides. In most applications these will be a 13mm nut/bolt combination

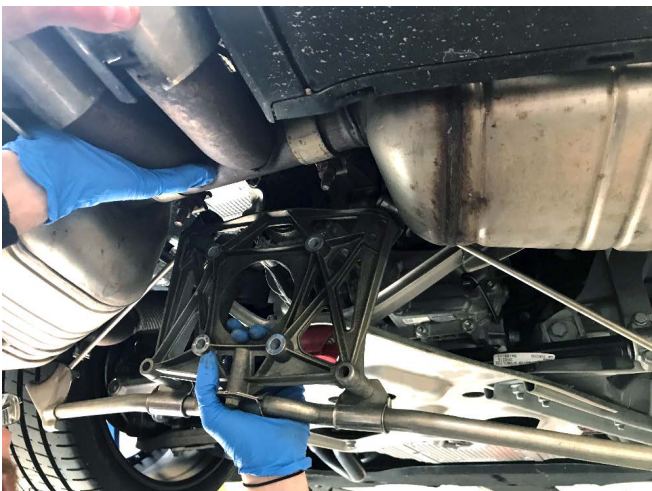


Pictured Right: Remove factory hardware from the rear mounting bracket and slide it towards the front of the car. In most applications these will be an E-12 Torx bolt.



Pictured Left: Remove vacuum tubing from the factory exhaust valves on both sides.

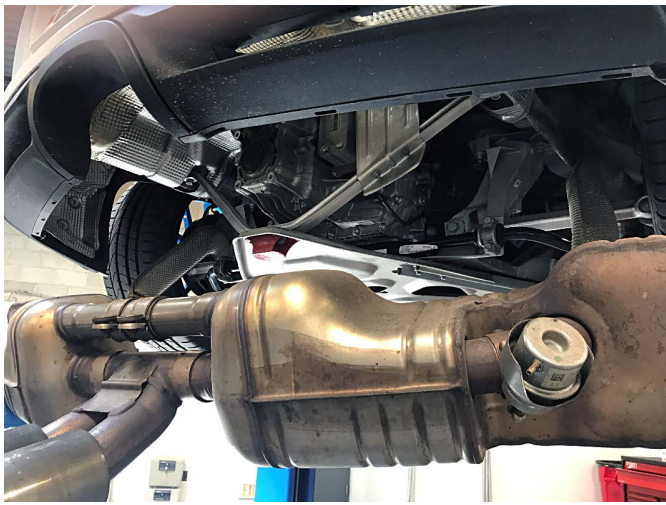
* If your car is not equipped with the factory Porsche Sport Exhaust, skip this step and refer to the SOUL Valve Controller Installation Guide



Pictured Left: Locate and remove the central mounting bolts (QTY:4) on the exhaust support bracket. In most cases these are a E-14 Torx bolt.



After removing the four bolts, the exhaust will not be supported. It helps to have a friend/jack to support the exhaust.



Pictured Left: Guide the exhaust out downwards and towards the rear of the car

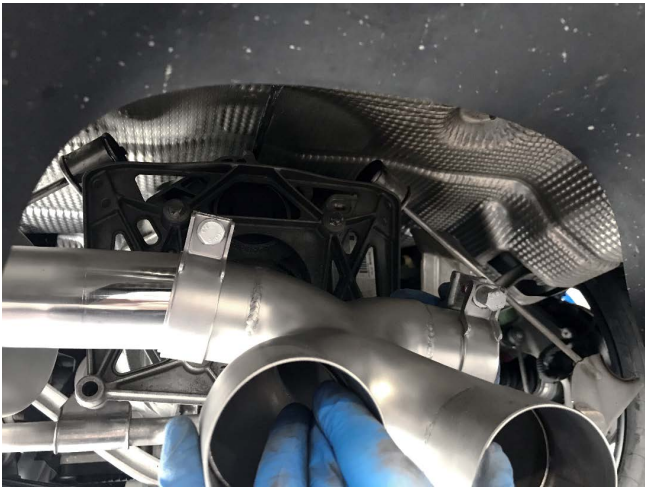


Pictured Left: Reinstall the exhaust mounting bracket with the four E-14 Torx bolts. The SOUL system is two pieces which allows for an easier installation.

Pictured Right: Carefully guide driver's side portion of your new SOUL exhaust into position.



Pictured Left: If your factory gaskets are in good shape it is okay to coat them in a copper gasket sealant and re-use them. **If you plan on racing the vehicle, OEM Porsche gaskets are recommended.** Otherwise, install the supplied gasket. Loosely install the two supplied nuts/bolts (13mm) into the header/muffler flange. Leave them loose enough to allow for adjustment later.



Pictured Left: Slide your SOUL exhaust outlet “X” pipe onto the driver’s side muffler outlet pipe. Loosely tighten the supplied bolt enough to leave room for adjustment later.



Pictured Left: Install the passenger’s side SOUL muffler following the same procedure as the previous side. Slide the muffler outlet into the outlet “X” pipe and loosely tighten.



At this point you can start to tighten all exhaust hardware to torque **except the outlet “X” pipe**. Start from the front of the exhaust and work rearwards tightening each side equally alternating between them.

Pictured Right: Reinstall the sleeve clamps around your new SOUL exhaust and the mounting bracket.





Pictured Left: Remove the factory vacuum line from the T junction.



Pictured Left: Vacuum T-Block with both left and right vacuum hoses removed.

Pictured Left / Below: Install the supplied vacuum hose and route out of the way either as photographed or to your liking. Connect each side to their respective valves, one on the driver's side and one on the passenger's side of the exhaust.



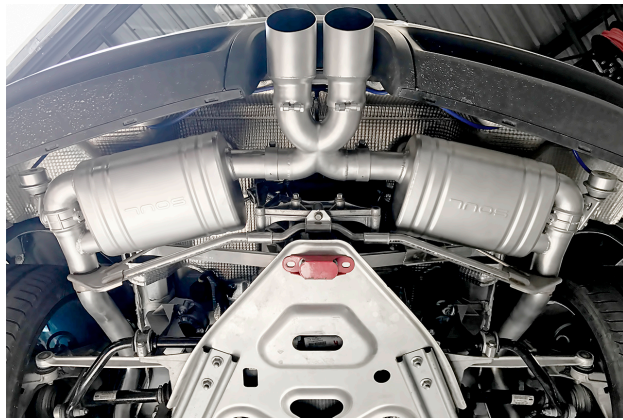
Pictured Left: With the "X" Pipe between the muffler still loose, hand fit the tips to adjust the height to your liking.



Pictured Left: After adjusting the tips to your height preference, remove the two tips and tighten the “X” pipe mounting hardware.



Pictured Left: After tightening the “X” pipe hardware, set and adjust the tip depth to your liking and tighten the hardware.



Pictured Left: Newly installed SOUL Exhaust



BE SURE TO THOROUGHLY CLEAN EXHAUST TO REMOVE FINGERPRINTS BEFORE STARTING

Note: You may find that after your first full heat cycle of the exhaust that you need to re-adjust the tip placement to your liking. Additionally, the tone and sound of your exhaust will likely change as the mufflers get broken in, roughly a thousand miles or so.

You have now successfully completed the installation of your new Soul Performance Products exhaust! Thank you for your business and if you have any questions during/after the installation please do not hesitate to call or email at the details below.

SOUL PERFORMANCE PRODUCTS

2300 Maryland Road | Suite B
Willow Grove, PA 19090
(267)-818-3201
customerservice@soulpp.com

Disclaimer: This installation guide is intended to clarify the install process of your new Soul Performance Products components. Please take proper precautions and safety measures when working on your vehicle and perform this work at your own risk



- (2) Remote Valve Key Fobs
- (2) Bags of Vacuum Hose
- (1) Bag of T-fittings and connectors
- (10) Black Zip Ties
- (1) Pig Tail Connector
- (1) Valve Control Box

Packing Sign Off _____

Shipped on ___/___/_____



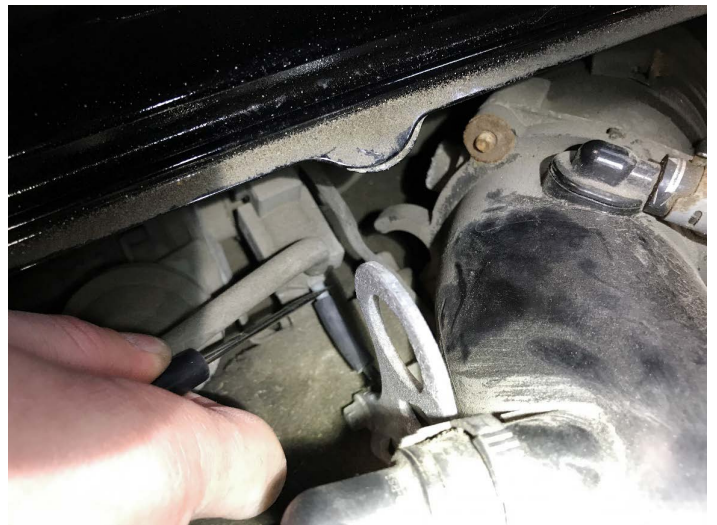
Pictured Left: Gain access to the engine compartment of your car. In this case on the Cayman, lift the rear hatch and remove the carpeting above the engine.

Pictured Right: Remove the engine compartment lid by taking out the mounting hardware. In this case, there were 5 torx bolts holding it in place.

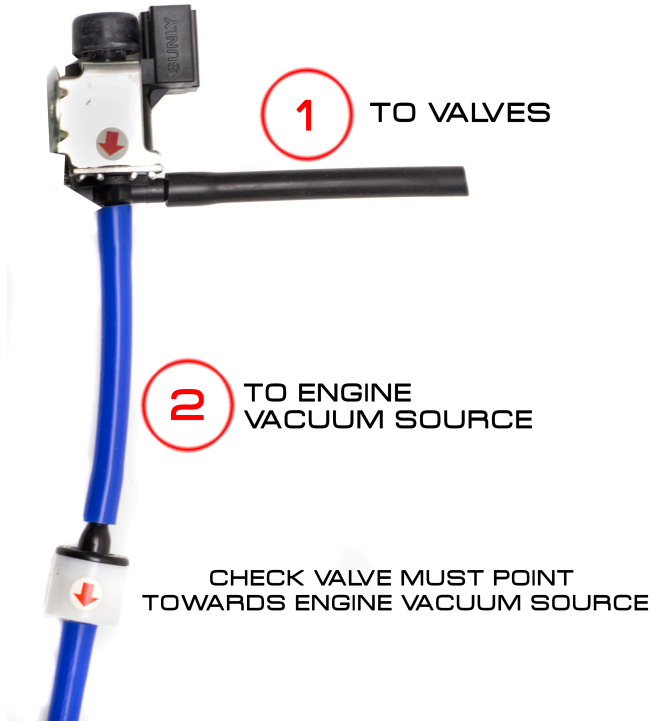


Pictured Left: Remove the engine compartment lid

Pictured Right: Locate a constant engine vacuum source. We chose this one below the intake on the end of the engine nearest the rear of the car.



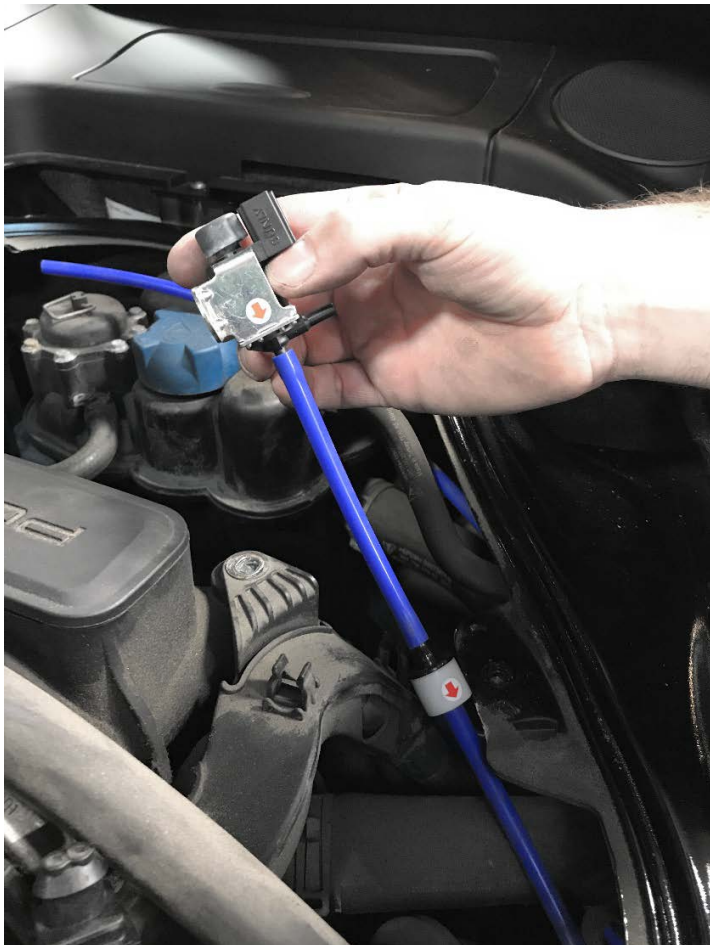
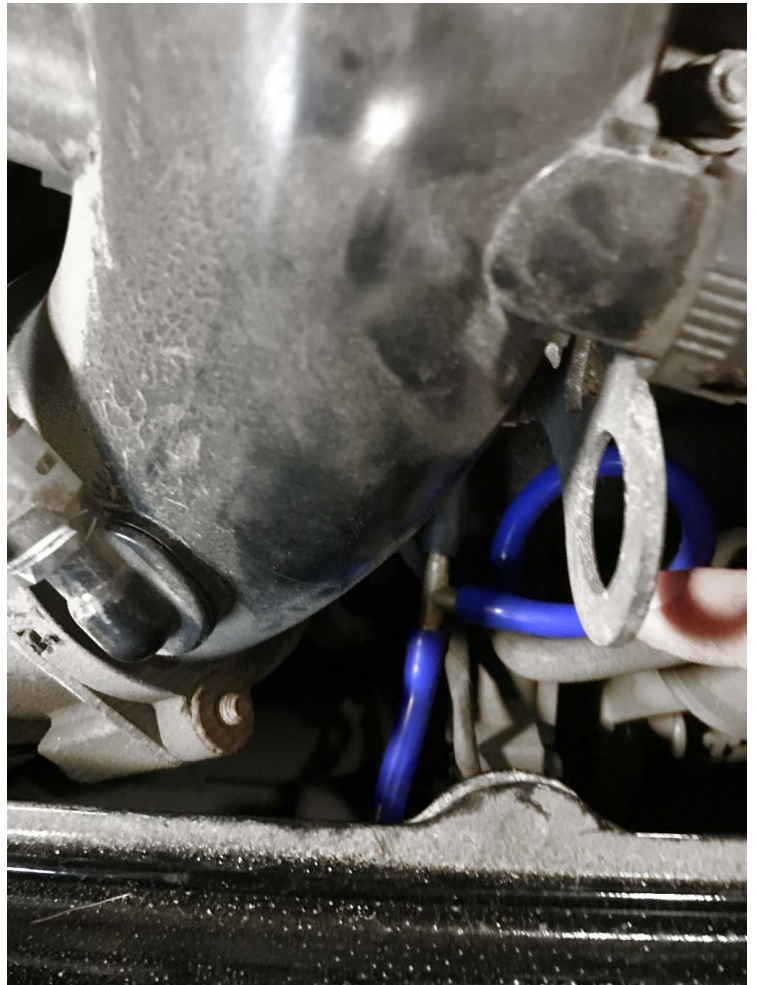
Pictured Left You can either assemble this section on the ground as shown, or install piece by piece in the engine bay.



Pictured Below: The black vacuum hose at the "12" position is the factory vacuum hose

At the "3" position is the looped vacuum hose that goes from the "T" junction to the factory solenoid you located on the previous page

At the "6" position is the long tube that leads up to the supplied solenoid as shown on the previous page



Pictured left: After connecting the vacuum tubing below the intake, route the long portion of the tubing with the check valve installed around to the front of the engine (closest to the engine bay bulkhead) and install the supplied solenoid on the loose end.



Pictured Left: In this photo, the orientation is that the bottom of the picture is towards the front of the car and the top of the photo is towards the rear.

Install the supplied solenoid to the location shown. On the 987.2 this mounting position is not used from the factory, that is where we decided was the best place to attach the supplied solenoid.



Pictured Left: Running the vacuum line from the front of the engine towards the rear, be careful to keep the line away from the shift linkages and any other moving parts.



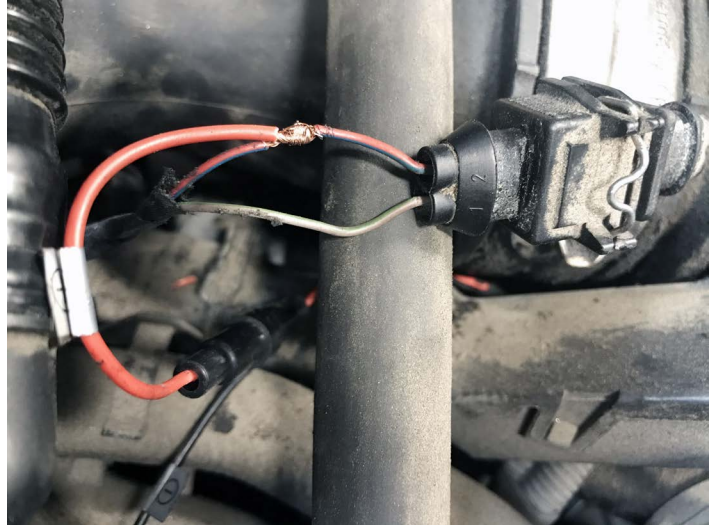
Pictured Left: After passing the transmission the vacuum line should exit here, ready to be installed onto the valve.

Pictured Right: The newly run vacuum line attached to the valve on your new Soul Performance Products Exhaust. We chose to tuck our vacuum tubing behind the factory heat shields, you can do it this way or another way of your choosing.





Pictured Left: Find a key hot 12V power source to tap into. Cut back any heat shielding/wrap to expose the wires.

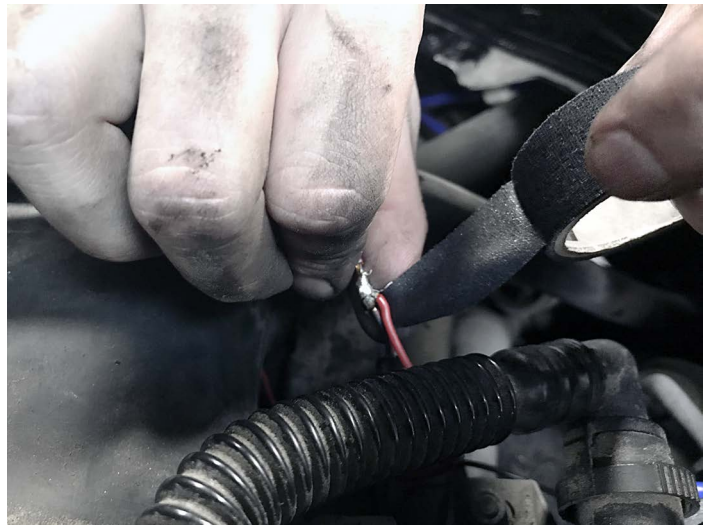


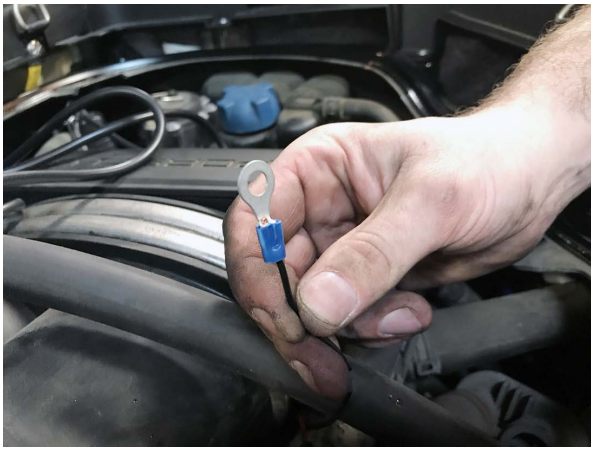
Pictured Right: Splice valve controller 12V power to the key hot 12V source of your choice



Pictured Left: Securely solder or crimp the power connection

Pictured Right: Shrink wrap or wrap the newly created electrical connection

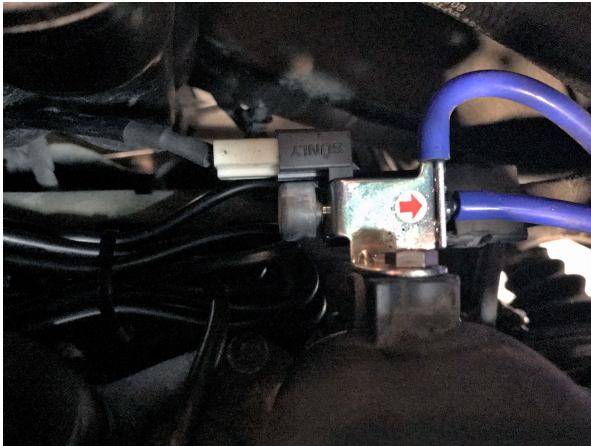




Pictured Left: Crimp eyelet to the ground wire on the valve controller



Pictured Right: Attach the ground to the engine or frame of the car. Make sure that the connection point is clear of any rust or grease.



Pictured Left: Neat installation with proper cable management



Pictured Right: Find a position of your choosing to mount the valve controller box

You have now successfully completed the installation of your new Soul Performance Products valve controller! Thank you for your business and if you have any questions during/after the installation please do not hesitate to call or email at the details below.

SOUL PERFORMANCE PRODUCTS
2300 Maryland Road | Suite B
Willow Grove, PA 19090
(267) 818-3201 | Office
customerservice@soulpp.com

SOUL
PERFORMANCE PRODUCTS