

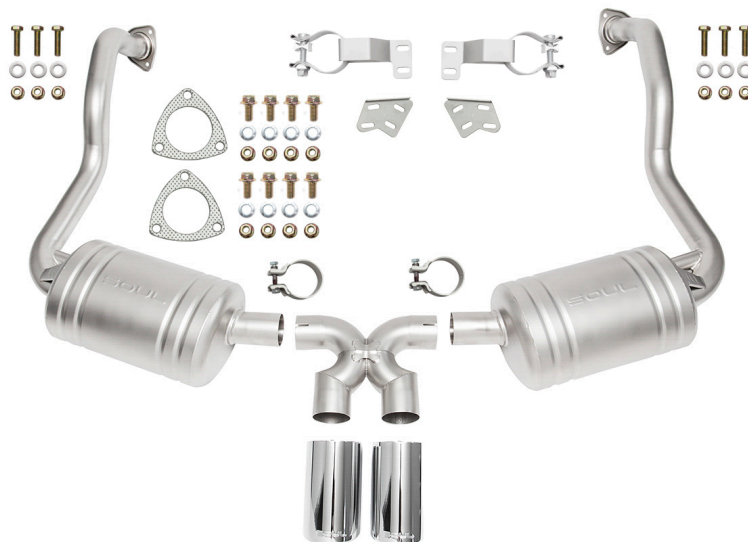
Installation Guide

Porsche 987.1 Boxster / Cayman
Performance Exhaust System

SOUL

PERFORMANCE PRODUCTS

Disclaimer: This installation guide is intended to clarify the installation of your new Soul Performance Products exhaust. **Please review this guide in full before beginning installation.** Please take proper precautions and safety measures when working on your vehicle and perform this work at your own risk



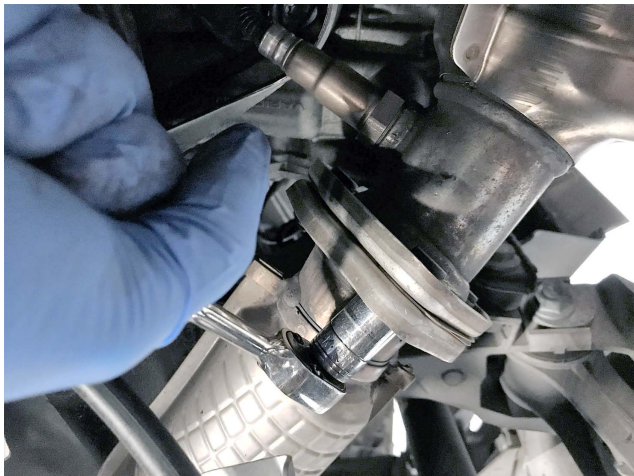
- (1) Left Muffler
- (1) Right Muffler
- (2) Exhaust Tips
- (2) Swivel Seal 60 Clamps (single wall tips only)
- (1) Outlet X-Pipe
- (2) X-Pipe Clamps
- (2) Three-Bolt Gaskets
- (6) M10 Long Bolts w/ (6) M10 Nuts
- (8) M10 Short Bolts w/ (8) M10 Nuts
- (2) Exhaust Hanger Bracket Sections
- (2) Exhaust Hangers Support Mounts
- (2) 2" Accuseal Clamps

Shipped on ____/____/____

Packing Sign Off _____



Start by raising your car and removing the rear wheels. Then remove the tire shield from the fender wells (three 10mm bolts and four T-25 Torx bolts) on both sides (it is not absolutely necessary to remove the wheels and tire covers, it will however make the install much easier).



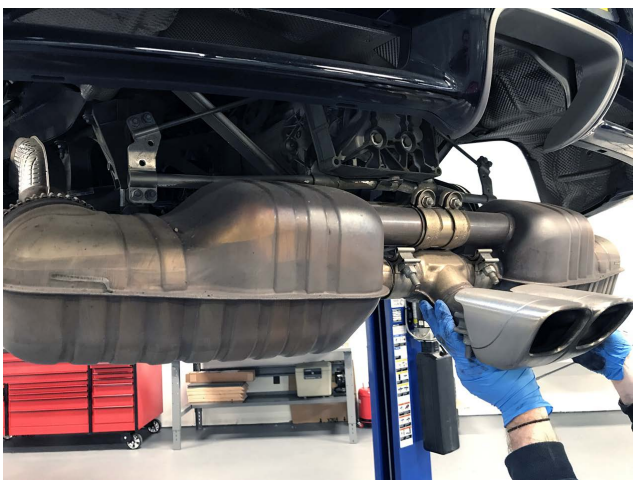
Remove factory mounting hardware from the header/muffler flanges on both sides. In most applications these will be a 13mm nut/bolt combination.



Remove factory hardware from the rear mounting bracket. (two) 13mm nut & bolt combinations per side.



After removing the four bolts, the exhaust will not be supported. It helps to have a friend/jack to support the exhaust.



You can now slide the exhaust rear and downwards to remove it from the car.



If your factory gaskets are in good shape you can coat them in a copper gasket sealant and re-install them onto the header flange studs at this time. Otherwise, use the supplied gaskets and install them on the header flange studs at this time. If you plan on using the vehicle on the track, we recommend installing new OEM Porsche gaskets.



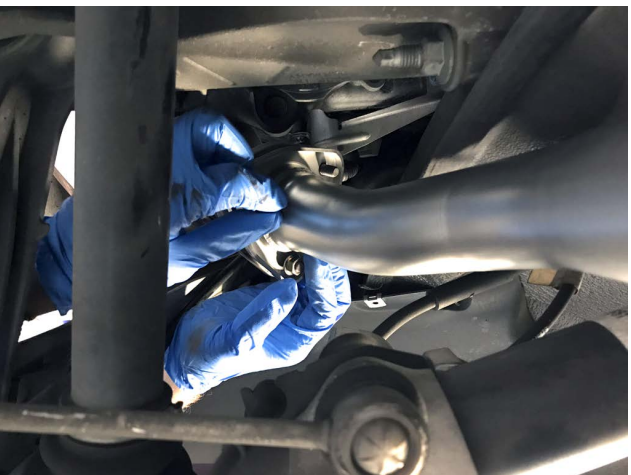
Slide the driver's side half of your new SOUL exhaust up and into its position. Loosely tighten the three 13mm supplied nuts onto the header flanges enough to provide support but still loose enough to allow for adjustment later.



Install and loosely tighten the SOUL exhaust outlet "X" Pipe.



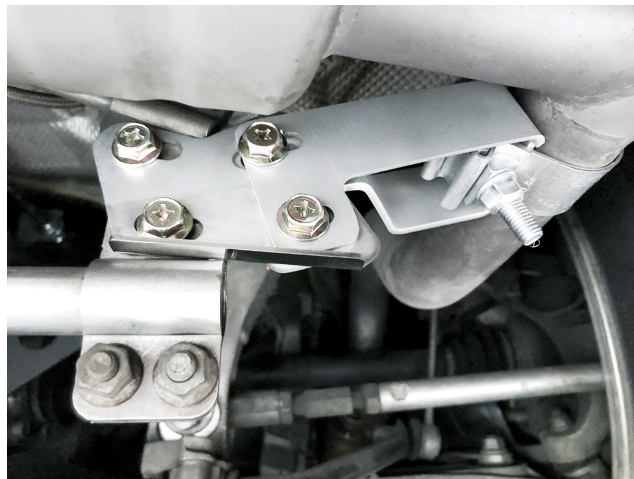
With the 3 bolt gasket coated and in place, install the passenger side portion of your SOUL exhaust into position and insert the outlet pipe on the muffler into the outlet "X" Pipe.



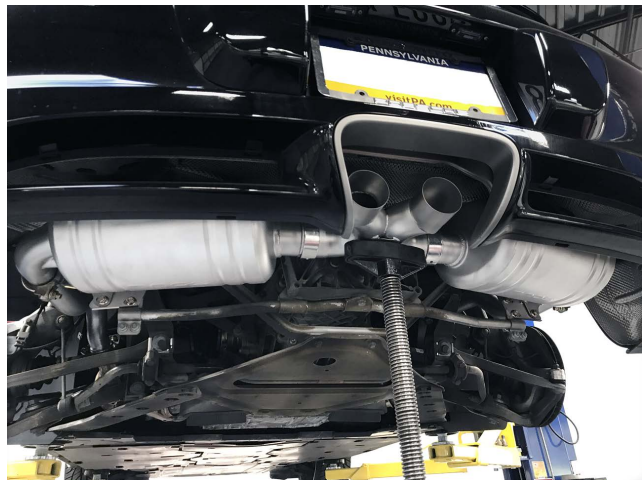
Loosely tighten the three 13mm supplied nuts onto the header flanges enough to provide support but still loose enough to allow for adjustment later.



Install the supplied inner half of the SOUL exhaust support bracket loosely with the two 13mm nut/bolts.



Install the second, outer portions of the SOUL exhaust mounts along with Accuseal clamp as shown. Loosely tighten the hardware (13mm nut/bolt)



With the hardware on your new SOUL exhaust still loose, either use a jack or a friend to raise the exhaust into position, as high as it will go.



With the jack and / or friend supporting the exhaust in the correct position, start from the front of your SOUL exhaust moving rearward and tightening the mounting hardware. Torque down the hardware on the exhaust hangers: 40 ft-lbs minimum on Accuseal clamps and 18 ft-lbs minimum on nuts. Tighten each side equally a small amount at a time.

- **Leave the outlet "X" pipe between the mufflers loose enough to still allow for height adjustment**
- Tighten each side incrementally alternating between sides to minimize alignment discrepancies



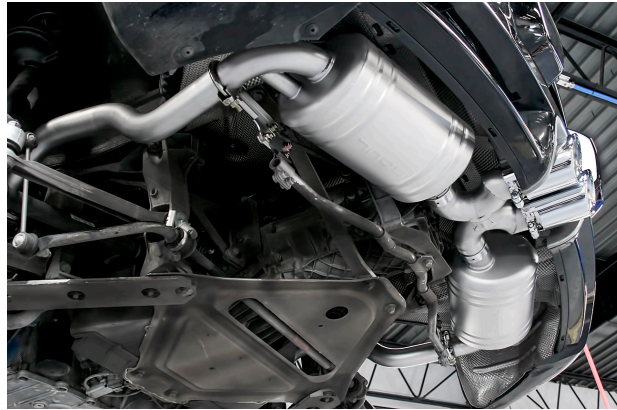
Loosely install the SOUL exhaust tips onto the outlet "X" pipe and position the height as desired.



After positioning the outlet "X" pipe height as desired, remove the SOUL exhaust tips to allow enough room to tighten the 13mm hardware on the outlet "X" pipe locking it in place. Torque Accuseal clamps to a minimum of 40 ft-lbs.



Reinstall the SOUL exhaust tips and set the depth as desired. Tighten the 10mm bolts on the clamps.



Pictured Left: Newly installed SOUL exhaust



BE SURE TO THOROUGHLY CLEAN YOUR NEW EXHAUST TO REMOVE FINGERPRINTS BEFORE STARTING

Note: You may find that after your first full heat cycle of the exhaust that you need to re-adjust the tip placement to your liking. Additionally, the tone and sound of your exhaust will likely change as the mufflers get broken in, roughly a thousand miles or so.

You have now successfully completed the installation of your new Soul Performance Products exhaust! Thank you for your business and if you have any questions during/after the installation please do not hesitate to call or email at the details below.

SOUL PERFORMANCE PRODUCTS
2300 Maryland Road
Willow Grove, PA 19090
(267) 818-3201
customerservice@soulpp.com

