

Disclaimer: This installation guide is intended to clarify the install of your new SOUL exhaust component. **Please read this guide in full before beginning installation.** Do take proper precautions and safety measures when working on your vehicle and perform this work at your own risk.



- (2) Headers
- (4) - M8-1.25x40mm Bolts
- (2) - M8-1.25x30mm Bolts
- (6) M8-1.25 Locking Nuts
- (12) M8 Flat Washers

Smoke Tested _____

Packing Sign Off _____

Shipped on ____ / ____ / ____

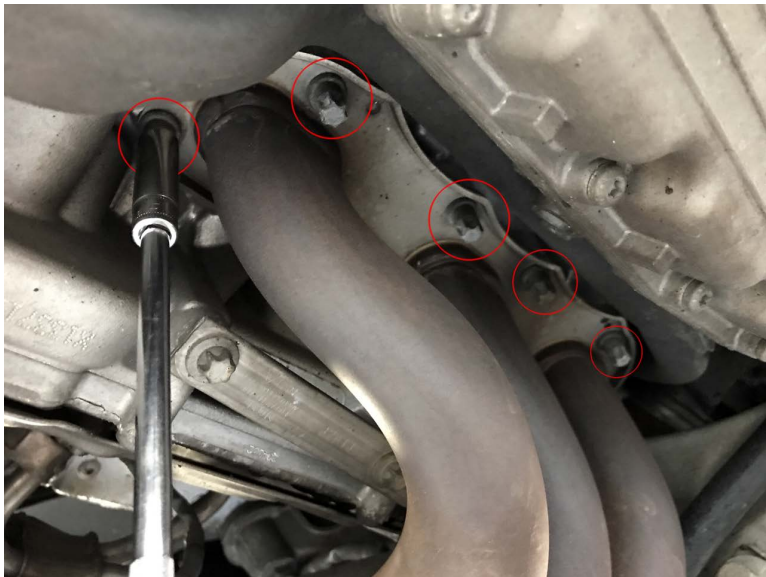
Tools Required For Install

- E12 Inverted Torx Socket
- 13mm Wrench
- 13mm Socket
- 6mm Allen Key
- 22mm Wrench
- Anti-Seize



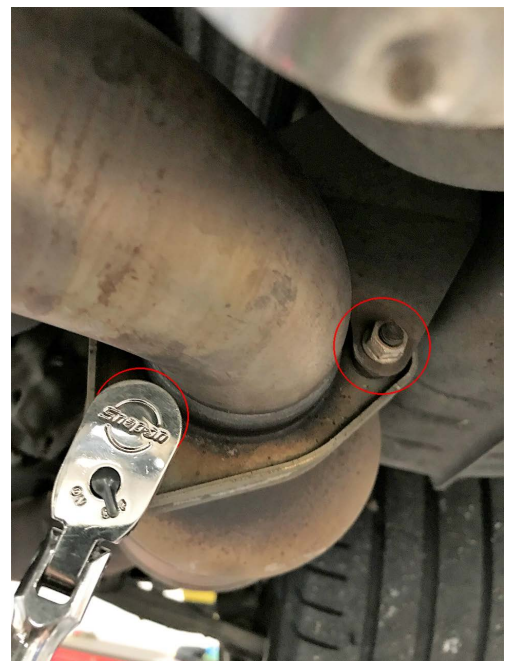
Pictured Left: Safely support your car either with a lift or with a jack and jack stands so that you can access the underside of the engine.

Pictured Right: Carefully use your 22mm wrench to loosen (do not fully remove) the oxygen sensors, there are two per side. **It is imperative that the oxygen sensor locations do not get mixed up on re-installation. You can mark them as fore and aft to help avoid confusion.** Take precaution as to not damage the wiring.



Pictured Left: Using an E-12 torx socket, remove the 9 bolts per side holding the headers to the cylinder head.

Pictured Right: Remove the 13mm nuts from the header/muffler flange.
Depending on the usage/condition of your vehicle, these may be corroded. You can saturate them in a penetrating oil once a day for a week leading up to your installation to make it easier.



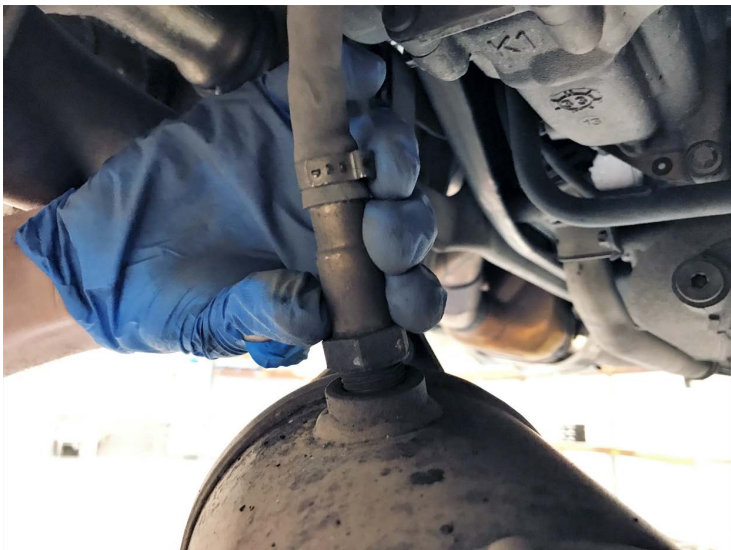


Pictured Left: You may need to pry between the muffler can and the muffler mounting bracket in order to move the rear system into alignment with the header flanges. This is why we loosened the band straps in step 2.

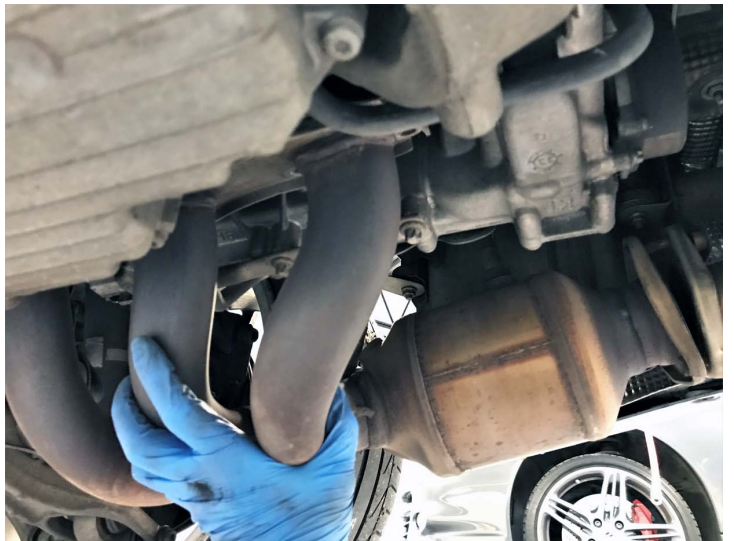
Pictured Right: You may need to pry the support bracket for the side mufflers off of the studs on your factory headers. Utilize the movement gained by loosening the rear muffler band straps to aid in this process.



Pictured Left: You can now remove the oxygen sensors, taking note of their correct orientation and position.



Pictured Right: Carefully guide your OEM headers down and out of the car.



Pictured Left: Coat your OEM gaskets with a copper gasket sealant for the best possible seal and install onto your SOUL headers with the tab in the vertical position as shown.



Pictured Left: Guide SOUL headers into place and loosely tighten the hardware



Pictured Right: Using your E-12 torx socket, loosely tighten the remaining hardware to the same depth.

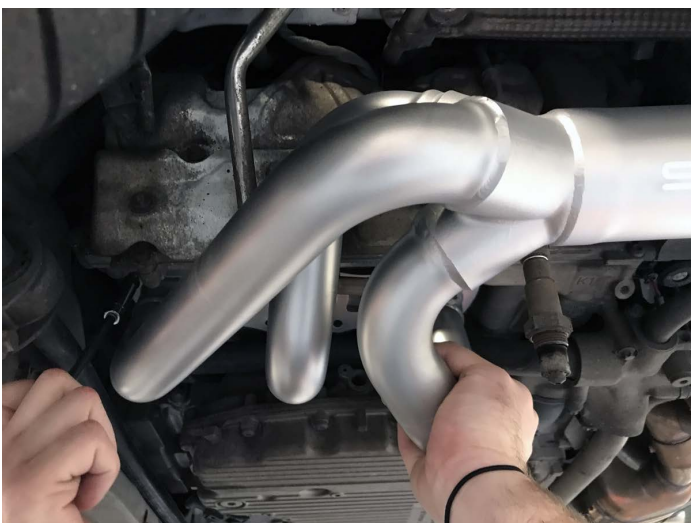


Pictured Left: Coat the OEM gaskets in a copper gasket sealant and guide them into place. You can slide on of the bolts into position (without the nut) to hold it in place if needed.

Pictured Right: You may need to pry between the muffler can and the muffler mounting bracket in order to move the rear system into alignment with the header flanges. This is why we loosened the band straps in step 2.



Pictured Left: With the header flange, muffler flange and side muffler support bracket in line, install and snug the hardware. The M8-1.25x40mm bolts/washers go into the top two positions where the side muffler bracket mounts and the M8-1.25x30mm bolt/washer goes in the remaining location at the bottom of the flange.



After you are satisfied with the positioning of the exhaust, tighten the hardware to specification using your 13mm socket and wrench.



Pictured Left: Tighten the E-12 Torx bolts to 22 ft-lbs / 30Nm, starting from the outside and working your way in to the middle.

Pictured Right: Use anti-seize to coat the threads of the oxygen sensors to make future removal easier.



Pictured Left: Install oxygen sensors into their correct positions and tighten using your 22mm wrench.

Not Photographed: Using your 6mm allen key, tighten the muffler band straps back into position.



BE SURE TO THOROUGHLY CLEAN YOUR NEW EXHAUST TO REMOVE FINGERPRINTS BEFORE STARTING

NOTE: You may notice that after you have heated the exhaust up to operating temperature for the first time that you may need to check all mounting hardware and re-torque as needed.

You have now successfully completed the installation of your new Soul Performance Headers! Thank you for your business and if you have any questions during/after the installation please do not hesitate to call or email at the details below

SOUL PERFORMANCE PRODUCTS

2300 Maryland Road | Suite B
Willow Grove, PA 19090
(267) 818-3201 | Office
customerservice@soulpp.com

SOUL
PERFORMANCE PRODUCTS