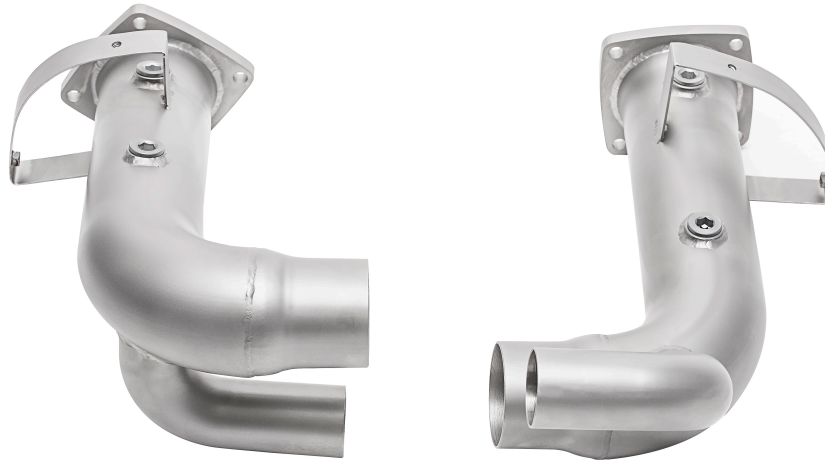


**Disclaimer:** This installation guide is intended to clarify the install of your new Soul Performance Products components. Please take proper precautions and safety measures when working on your vehicle and perform this work at your own risk



Please ensure that all components listed below are accounted for before beginning installation:

**INCLUDED COMPONENTS**

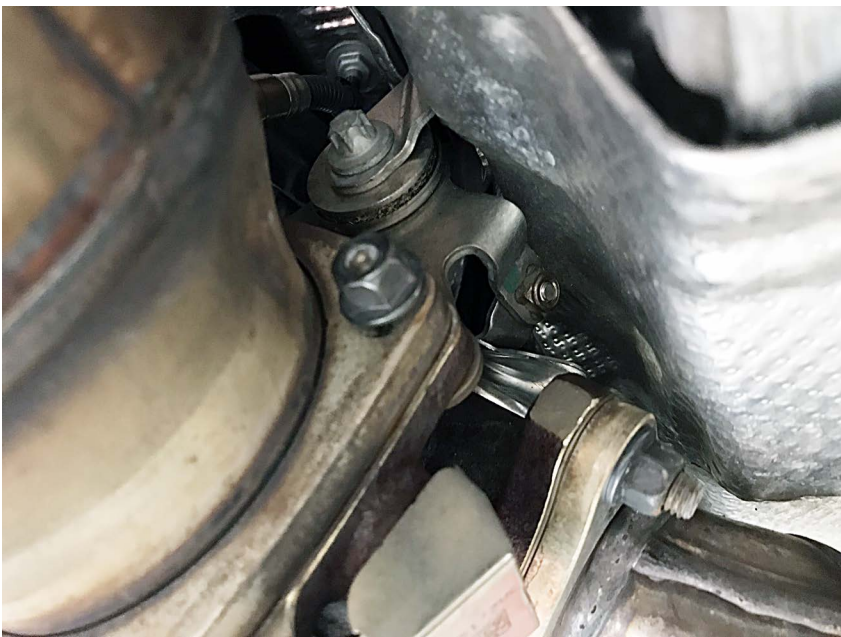
- (2) Cat Bypass Pipes
- (4) M8-1.25x30mm Bolts
- (2) M8-1.25x40mm Bolts
- (14) M8 Flat Washers
- (8) M8-1.25 Nuts

Packing Sign Off \_\_\_\_\_

Shipped on \_\_\_\_ / \_\_\_\_ / \_\_\_\_



**Step 1:** With the car safely supported, using a T30 torx socket remove the (4) torx bolts that secure each heat shield to the turbos and catalytic converters.



**Step 1b:** The two torx bolts on the turbo can be tough to see. There is one on the left and one on the right side of the turbo.



**Step 2:** Carefully remove the heat shield and keep the hardware close, you will be reinstalling it later in the guide.



**Step 3:** Using a 12mm wrench, loosen and remove the hardware holding the catalytic converter to the turbo. Be careful to not damage the one stud on the turbo side, you will be re-using it.



**Step 4:** Using a 22mm wrench loosen and remove both oxygen sensors. Be mindful of their positions (Primary and Secondary locations) and mark them if necessary to ensure that you re-install them in the correct position.



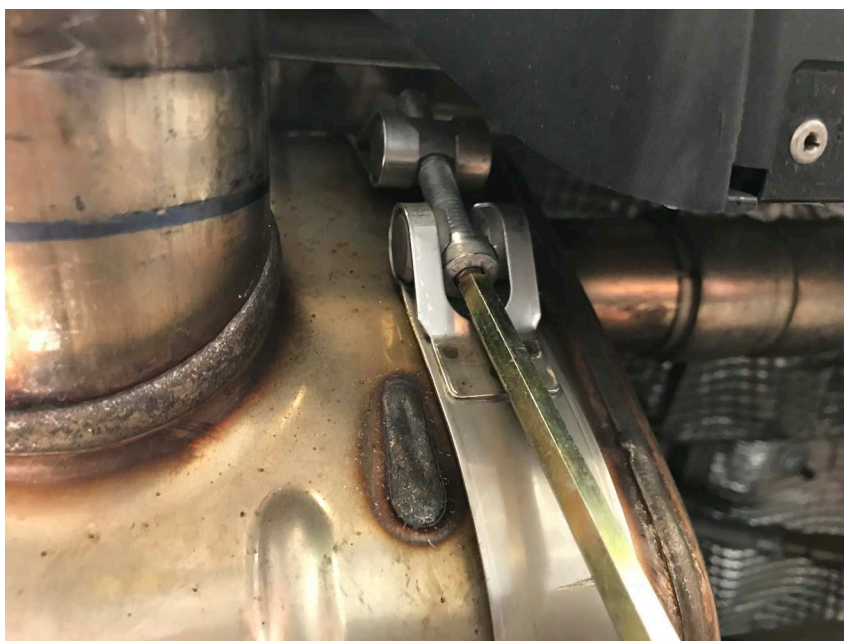
**Step 4b:** With both oxygen sensors removed you can tuck them out of the way.



Avoid touching the exposed sensor as the oil in your hands can damage their ability to read correctly.



**Step 5:** Remove the vacuum hose to the factory PSE valves.



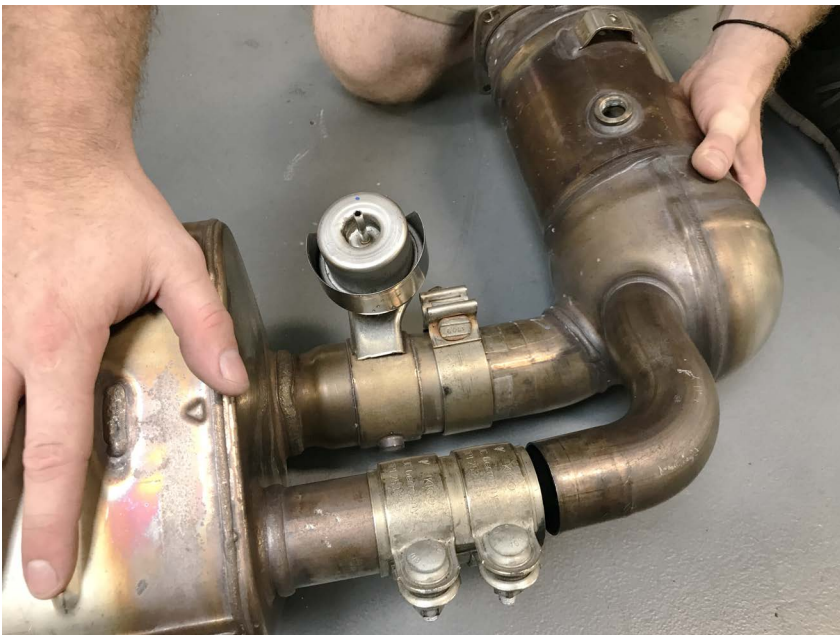
**Step 6:** Moving to the center muffler, using a 6mm allen drive loosen the band strap and slide it to the outside of the muffler.



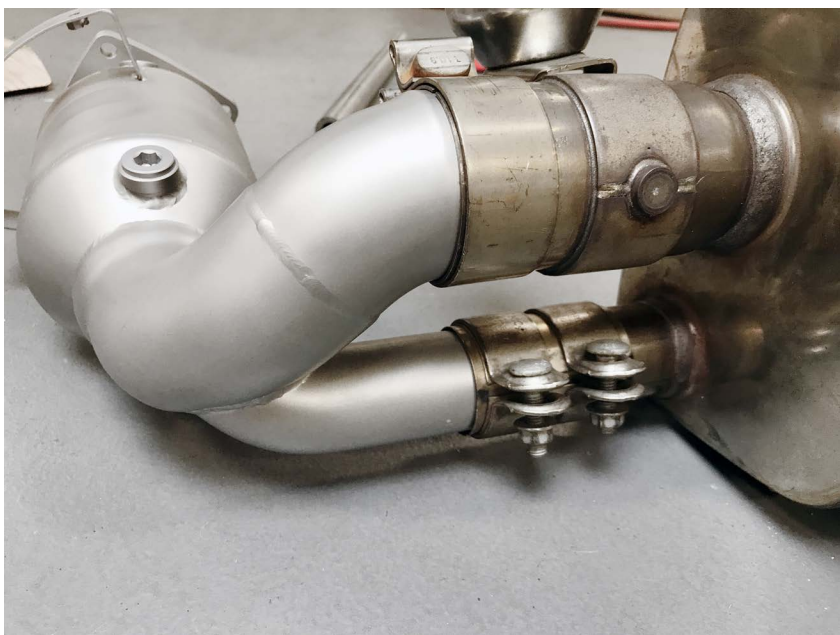
**Step 7:** Support the muffler with the help of a friend or a transmission jack as we have here.



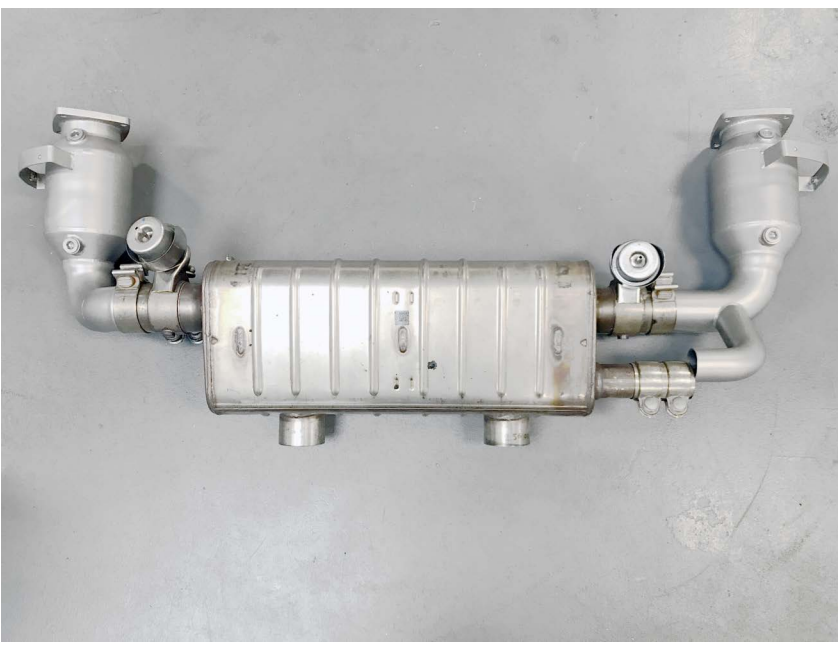
**Step 8:** Carefully slide the exhaust towards the rear of the car and gently lower it out being careful not to damage the studs on the turbo.



**Step 9:** Using a 15mm socket, loosen the accusal clamp on the larger pipe and 13mm socket to loosen the torca clamp and slide the catalytic converter out.



**Step 10:** Install the Soul Performance Products Cat Bypass Pipes into position, leave assembly loose to allow for adjustments later.



**Pictured Left:** Exhaust system loosely assembled and ready for reinstallation. (Sport Catalytic Converters pictured)



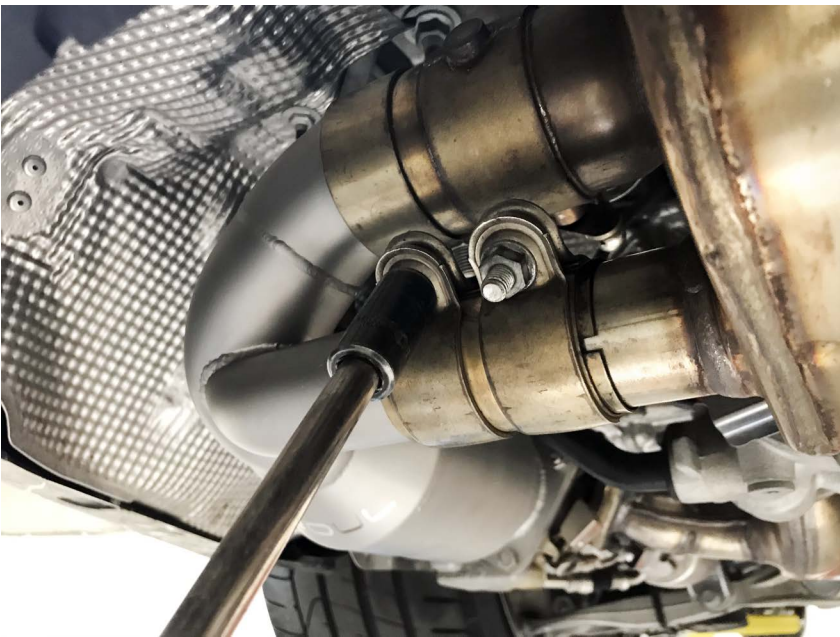
**Step 11:** Clean the flange on the turbo of any debris and reinstall the OEM metal gasket. You can use a copper gasket sealant to aid in this process.



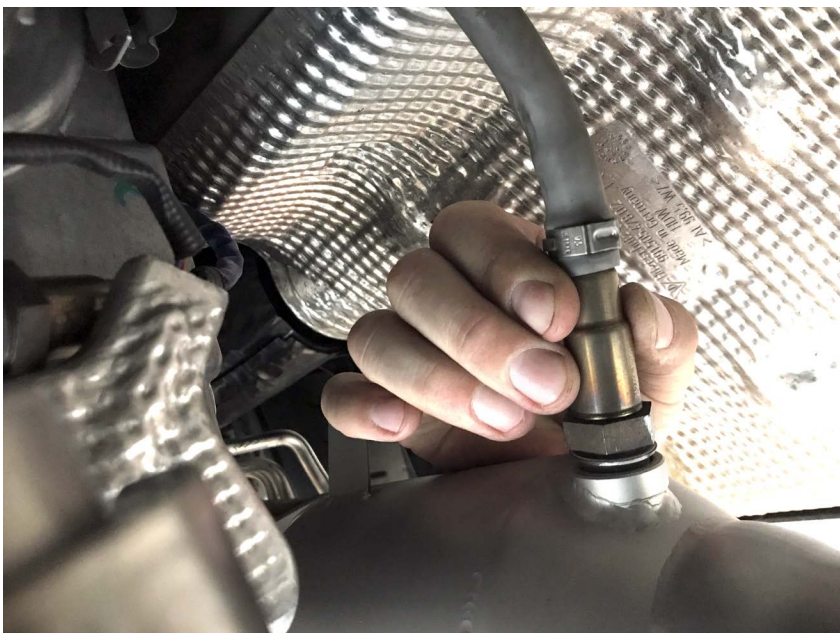
**Step 12:** Guide the exhaust and Cat Bypass Pipes up and into position and tighten the hardware with the 4 nuts and 3 bolts provided. One nut will be placed on the factory stud on the turbo.



**Step 13:** Install the band straps over the center muffler and muffler mounting bracket and tighten the 6mm allen head.



**Step 14:** Tighten the accuseal and torca clamp locking the center muffler and Cat Bypass Pipes together.



**Step 15:** Reinstall the oxygen sensors using anti seize and a 22mm wrench.



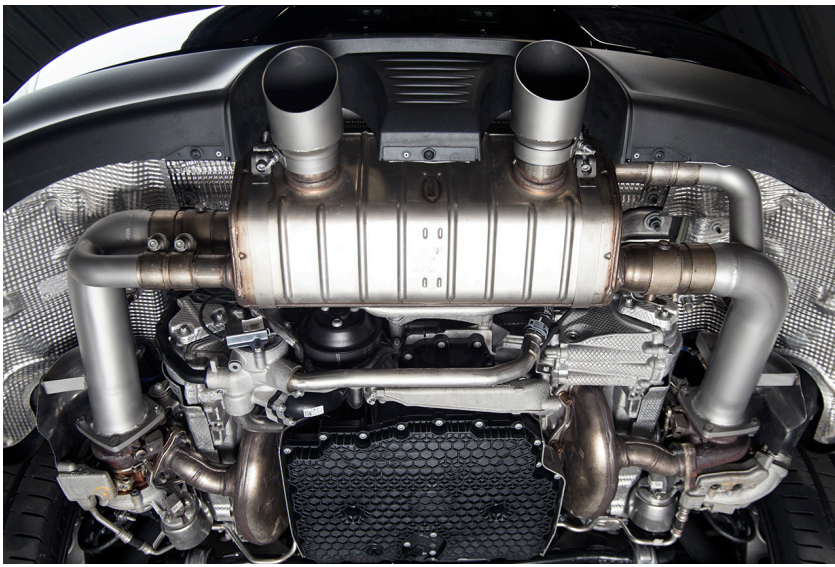
**Step 16:** Reinstall the factory heat shields onto your Soul Performance Products Cat Bypass Pipes.



**Step 17:** Reinstall the factory vacuum hose to the two valves on the PSE center muffler



**Step 18:** If you're also installing Soul Performance Products Exhaust Tips, slide them onto the factory exhaust and adjust the depth to your liking. Tighten the 10mm nut on the included t-bolt clamp.





**Pictured Left:** Newly installed Soul Performance Products Cat Bypass Pipes.



**BE SURE TO THOROUGHLY CLEAN YOUR NEW EXHAUST TO REMOVE FINGERPRINTS BEFORE STARTING**

You have now successfully completed the installation of your new Soul Performance Products components! Thank you for your business and if you have any questions during/after the installation please do not hesitate to call or email at the details below.

 You may find that after your first full heat cycle of the exhaust that you need to re-adjust the tip placement to your liking. Additionally, the tone and sound of your exhaust will likely change as the mufflers get broken in, roughly a thousand miles or so.

 You may notice smoke and fumes coming from the system upon first starting up the vehicle. This is due to oils used in manufacturing and is not a problem. The smell will dissipate in a short period of time after the exhaust has reached normal operating temperature.

**SOUL PERFORMANCE PRODUCTS**  
2300 Maryland Road | Suite B  
Willow Grove, PA 19090  
(267) 818-3201 | Office  
customerservice@soulpp.com

**SOUL**  
PERFORMANCE PRODUCTS