

SHIP SHEET

Porsche Carrera / Turbo X-Pipe Exhaust System

SOUL
PERFORMANCE PRODUCTS



Install Guide:



Please ensure that all components listed below are accounted for before beginning installation:

Exhaust Components

- o (1) X-Pipe
- o (1) Left Side Outlet Tip
- o (1) Right Side Outlet Tip

Clamps

- o (2) 3" V-Band Clamps
- o (2) 130-171MM Mikalor Clamps

Valves and Hardware

- o (1) Left- and Right-Side Valve Simulator
- o (2) Cushioned Valve Position Key
- o (2) Valve Springs
- o (1) 1/2" Aluminum Spacer (Bracket Mounting)
- o (1) 1/4" Aluminum Spacer (Bracket Mounting)
- o (2) 3/4" x 1/4" Aluminum Washers
- o (2) M6 x 1.0 20MM Bolts

Packing Sign Off _____

Shipped on ____ / ____ / ____

Thank you for your business and if you have any questions during/after the installation please do not hesitate to call or email at the details below.



You may notice smoke and fumes coming from the system upon first starting up the vehicle. This is due to oils used in manufacturing and is not a problem. The smell will dissipate in a short period of time after the exhaust has reached normal operating temperature.

SOUL PERFORMANCE PRODUCTS

2300 Maryland Road
Willow Grove, PA 19090
(267) 818-3201
customerservice@soulpp.com

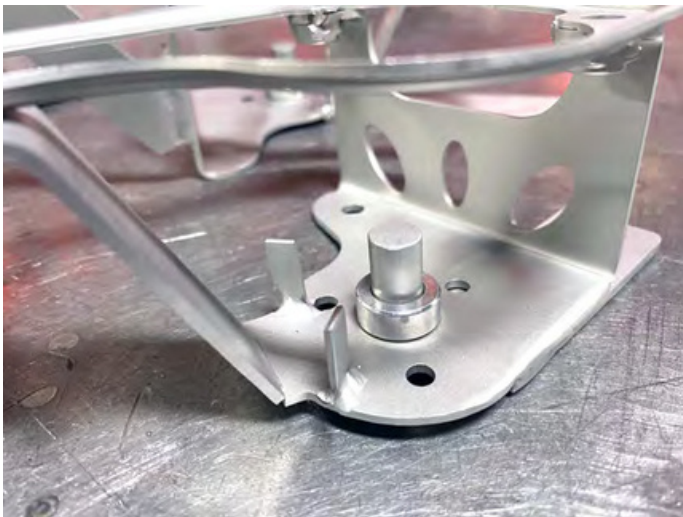


Step 1: Remove the factory exhaust and catalytic converters. Using a T30 Torx bit remove the three factory screws holding the valve actuator to the stock components.

Step 2: Remove the factory valve spring and replace with included springs.



Step 3: Insert a .25 aluminum spacer on the supplied bracket rod.



Step 4: Insert the valve position piece on top of the washer as shown (old design shown).



Step 5: Install factory valve solenoids onto the SOUL brackets. Make sure all the bracket components are properly lined up and that the spring has tension.



Step 6: Using a e10 Torx bit, remove bolts from the cam actuator cover. On the left side, remove both on the cover. For the right side remove the top most bolt on the cover and the nut on the heat shield (14mm).



Step 7: Install the valve actuator and reinstall bolts using factory hardware (right side pictured). Reconnect the valve actuator connector.

Step 8: On the left side, start with the upper right bolt as it will make it easier to install the left lower bolt. When removing the bolts from the heat shield piece, make sure to hold it in place when reinstalling. Plug in the valve actuator connector when finished.



Step 9: On the right side carefully screw in the o2 sensor before installing the catalytic converters or cat bypass pipes.(SOUL Cat Bypass Pipes shown)

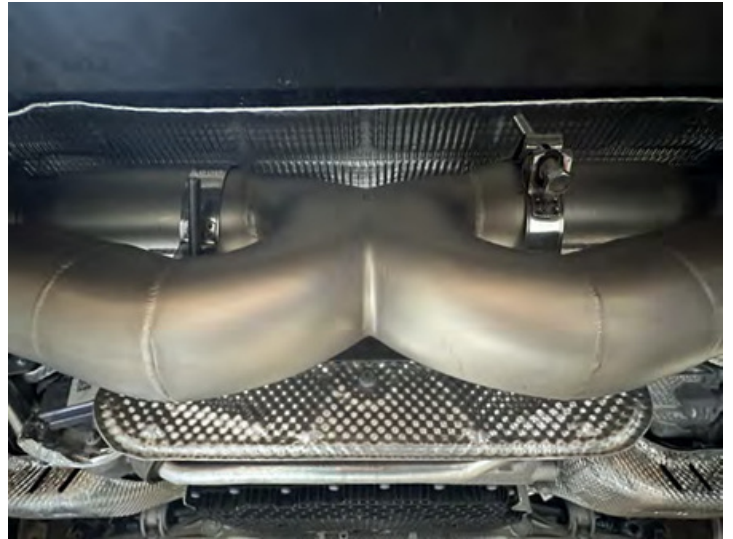
Step 10: Place the turbo band clamps on the catalytic converter section to turbo connections and loosely install on car.





Step 11: Loosely install supplied bolts and washers on the hanging cat mounting brackets.

Step 12: Loosely attach the black exhaust tips to the x-pipe with the provided v-band clamps. Lift the x-pipe up and rotate it into place where the stock muffler was. Slip the x-pipe ends into the catalytic converter outlet pipes and use the factory 3" torca clamps to re-attach the x-pipe to the car.



Step 13: Loosely install the provided mikalor clamp on the drivers side mounting bracket for the x-pipe, some bending of the clamp involved for optimal fitment

Step 14: Replicate this step on the passenger side. Now the system is loosely installed and free hanging.



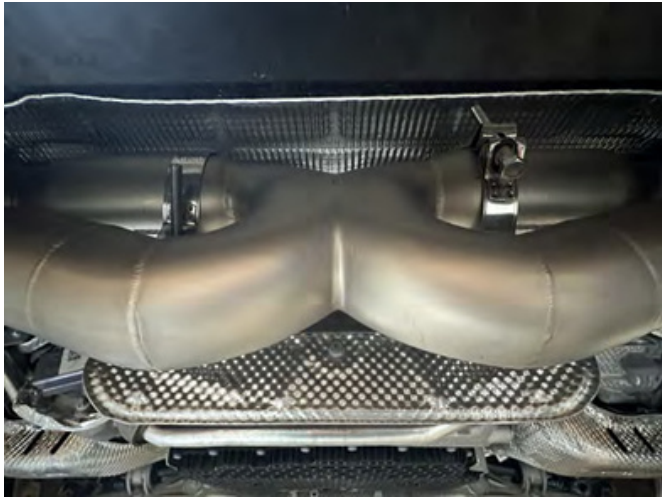
Step 15: Tighten the turbo band clamps on both sides using a 6mm allen socket





Step 16: Tighten bolts on the Torca clamps using a 15mm socket. Repeat on other side. Make sure the x-pipe is fully pressed up and situated against the back bracket.

Step 17: Tighten 13mm hardware on the cat mounting bracket on both sides.




Step 18: Tighten SOUL exhaust to factory brackets using provided Mikalor clamps.

Step 19: Insert tip outlets on outlet pipe and tighten clamps using a 11mm socket. Be mindful of the alignment of the outlet to the tip opening.

At this point torque down all clamps - 45 ft-lbs minimum for Torca - 36-48 in-lbs for V bands.



You have now successfully completed the installation of your new SOUL exhaust components! Thank you for your business and if you have any questions during/after the installation please do not hesitate to call or email at the details below.

 You may notice smoke and fumes coming from the system upon first starting up the vehicle. This is due to oils used in manufacturing and is not a problem. The smell will dissipate in a short period of time after the exhaust has reached normal operating temperature.

SOUL PERFORMANCE PRODUCTS

2300 Maryland Road
Willow Grove, PA 19090
(267) 818-3201
customerservice@soulpp.com