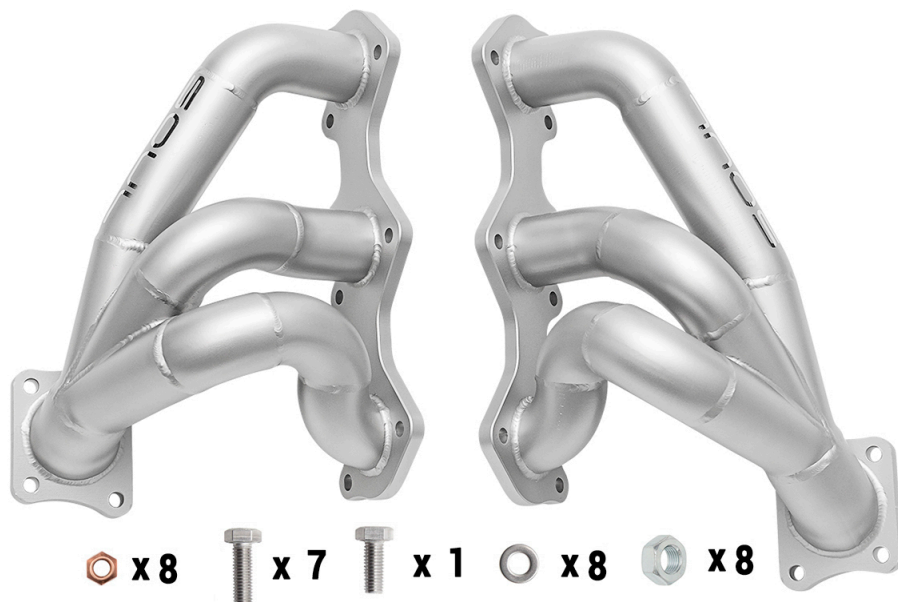


# INSTALLATION GUIDE

992 Carrera / Turbo  
Sport Headers

# SOUL

PERFORMANCE PRODUCTS



Please ensure that all components listed below are accounted for before beginning installation:

- (1) Driver Side Header
- (1) Passenger Side Header
- (7) M8 x 1.30mm Bolts
- (1) M8 x 1.25mm Bolts
- (8) M8 Washers
- (8) Locking Nuts
- (8) Non-locking Nuts (To remove factory studs)

Packing Sign Off \_\_\_\_\_

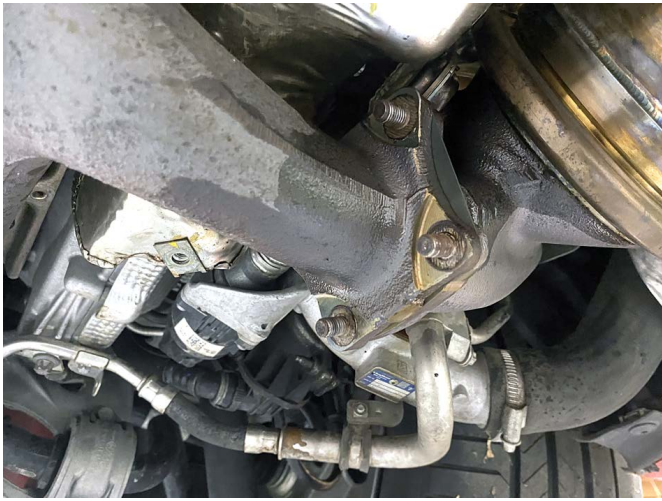
Shipped on \_\_\_\_/\_\_\_\_/\_\_\_\_



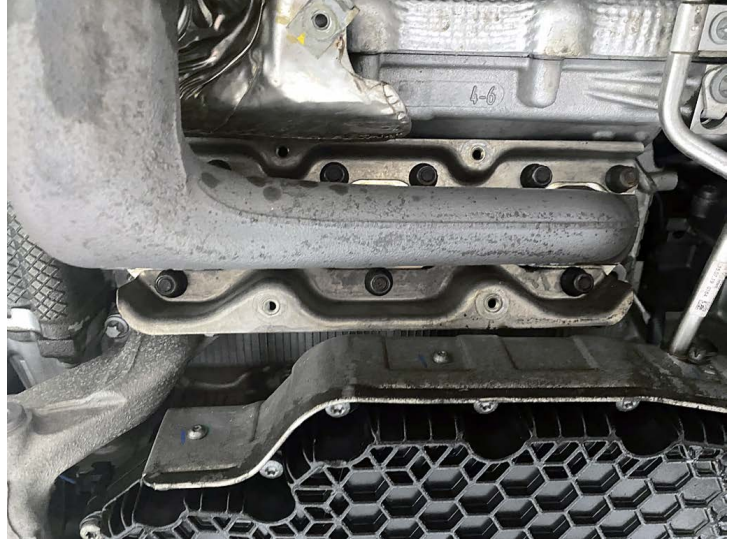
**Step 1:** After safely gaining access to the underside of vehicle, begin by removing the turbo heat shield hardware (E10 Torx nuts).

**Step 2:** Take care to remove the top nuts located on the top of the turbo area.

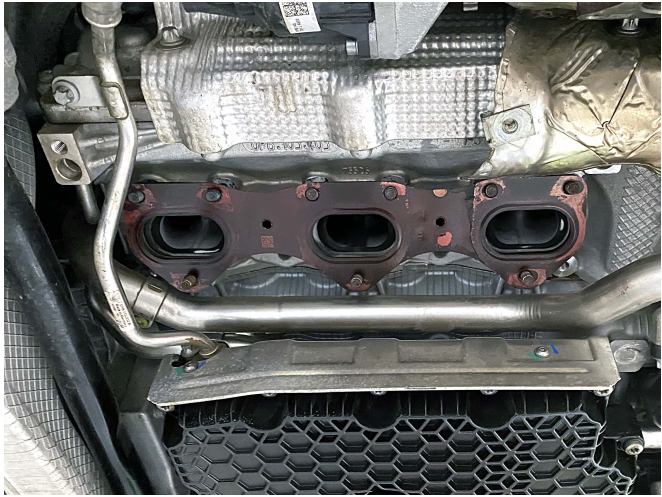




**Step 3:** To remove the factory headers you will need remove the 12mm nuts and studs in the turbo - to be replaced with included hardware. **We include non-locking nuts to use the double nut technique on the factory the studs to extract them.**

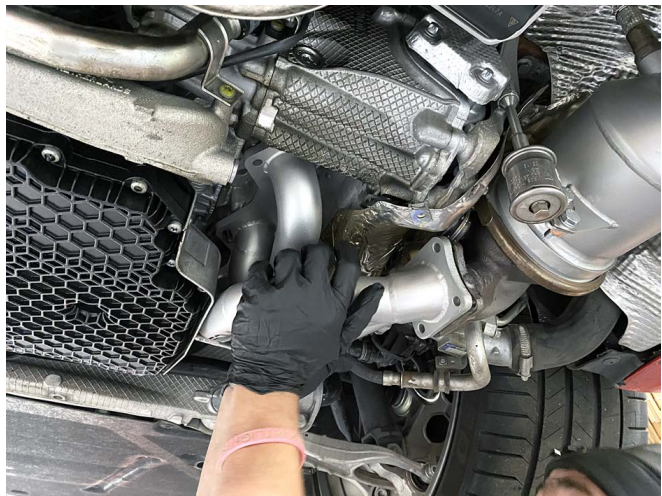


**Step 4:** Remove the nuts holding the headers onto the head with a 12 point 12mm socket.



**Step 5:** Remove the factory headers and inspect the factory gaskets to ensure they are in reusable condition - which in most cases they are - or prepare new gaskets.

**Step 6:** You will need to temporarily move the oil line on the driver side header area for clearance during installation of the SOUL headers (E10 Torx nut)

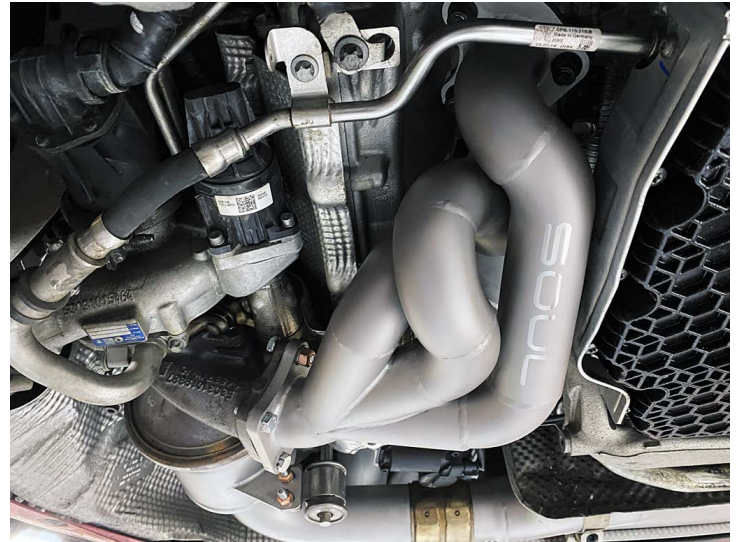


**Step 7:** Prepare gaskets and install the SOUL Sport Headers.

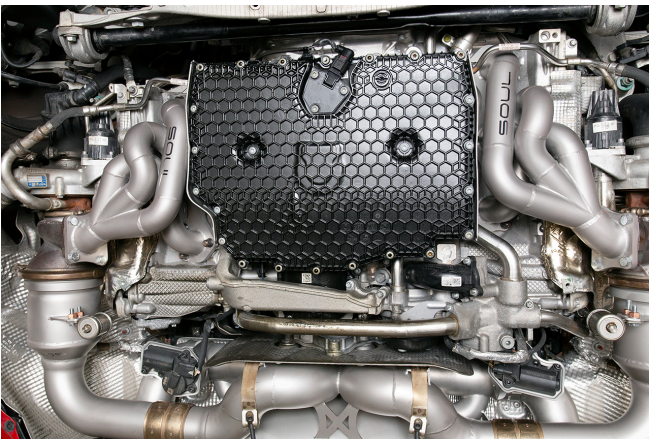


**Step 8:** Use included hardware (13mm) to mount the headers to the turbos. The one shorter bolt will be used on the passenger side forward upper hole where clearance is tight.


**Step 9:** Fully torque down all hardware - working from the inside out on the header to head end. Clearance will be tight, 90 degree crescent wrenches and / or a flex head socket wrench is recommended. Reinstall oil line nut removed earlier.



**Step 10:** Enjoy your new SOUL Sport Headers!



You have now successfully completed the installation of your new SOUL exhaust components! Thank you for your business and if you have any questions or suggestions during/after the installation please do not hesitate to call or email at the details below.

 You may notice smoke and fumes coming from the system upon first starting up the vehicle. This is due to oils used in manufacturing and is not a problem. The smell will dissipate in a short period of time after the exhaust has reached normal operating temperature.

**SOUL PERFORMANCE PRODUCTS**

2300 Maryland Road  
Willow Grove, PA 19090  
(267) 818-3201  
customerservice@soulpp.com