

Please ensure that all components listed below are accounted for before beginning installation:

Exhaust Components

- (1) Right Side Tip Outlet
- (1) Left Side Tip Outlet
- (1) Right Side Pipe
- (1) Left Side Pipe
- (1) Center X-Pipe Section

Valves

- (1) Left Side Valve Simulator
- (2) Cushioned Valve Position Key
- (1) Right Side Valve Simulator
- (2) Valve Springs

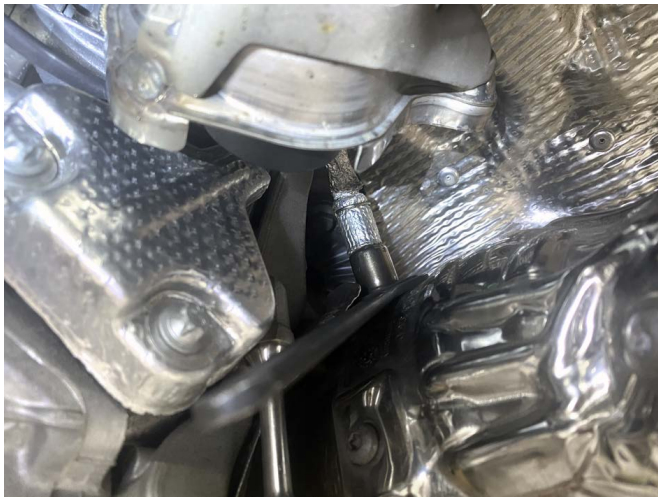
Hardware

- (4) M8 X 1.25 20MM Bolts
- (4) M8 Locking Nuts
- (8) M8 Washers
- (1) 1/2" Aluminum Spacer (Bracket Mounting)
- (2) 3/4" X 1/4" Aluminum Washer
- (1) 1/4" Aluminum Spacer (Bracket Mounting)
- (2) M6 X 1.0 20MM Bolts

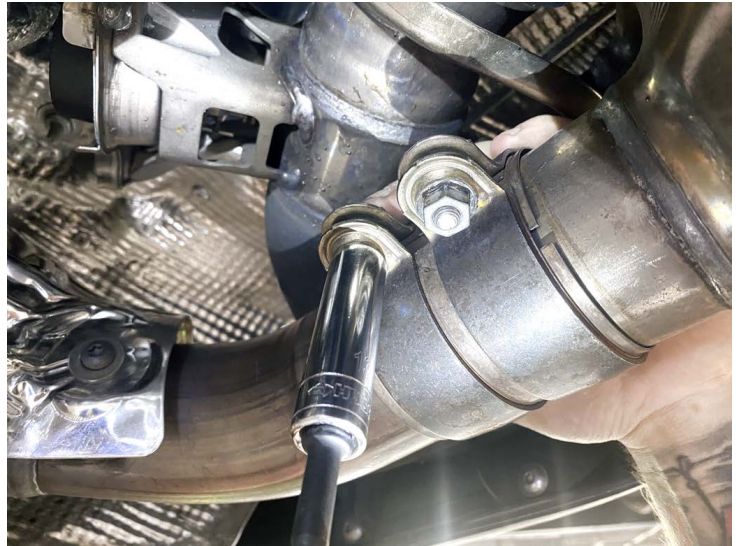
Clamps

- (2) 3.0" Torca Clamps
- (2) 3.0" V-Band Clamps
- (2) 140-150MM Mikalor Clamps

Packing Sign Off _____ Shipped on ____/____/____



Step 1: Start by loosening the O2 sensor bungs on both sides. Using a 22mm wrench is recommended. You will remove these later

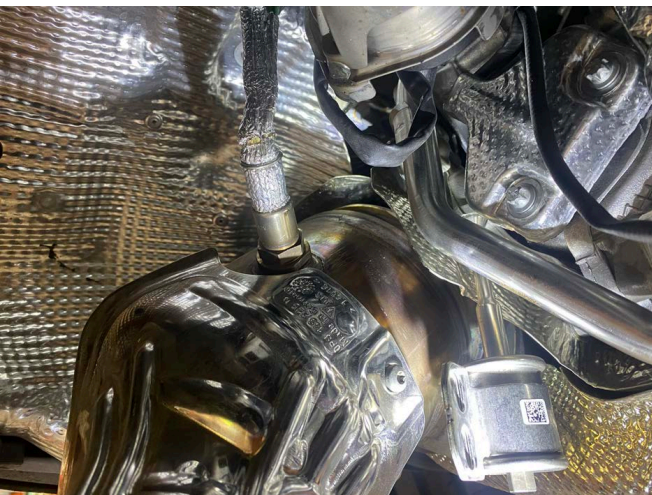


Step 2: Loosen the Torca clamps located on the cat to muffler connections (13mm socket).

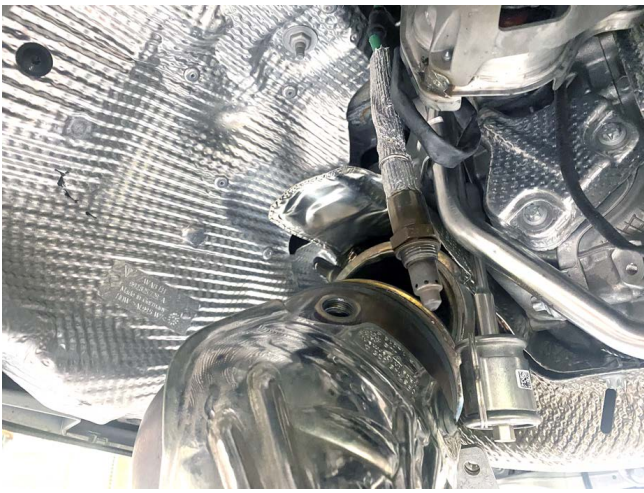


Step 3: Remove the bolts from the turbo v-bands using a 6mm allen socket. The factory bolts will be located and accessed on the top of the clamp.

Step 4: Remove the bolts from the cat mounting brackets using an e12 inverted Torx bit.



Step 5: Remove the turbo v-band clamps and remove the catalytic converters to access the o2 sensors.



Step 6: On each cat unscrew the o2 sensors and slide the previously loosened Torca clamp to the cat side. You can now safely remove the catalytic converters.



Step 7: Locate the valve actuators. Pop out the small grey tab to remove the valve connection wire.



Step 8: Tuck the valve actuator connections away to avoid damage during install.

Step 9: With help from a second set of hands or a pole jack, support the muffler and remove the bolts from band clamp using a 6mm allen socket.



Step 10: Carefully rotate and remove the factory muffler.



Step 11: Using a T30 Torx bit remove the three factory screws holding the valve actuator to the stock components.

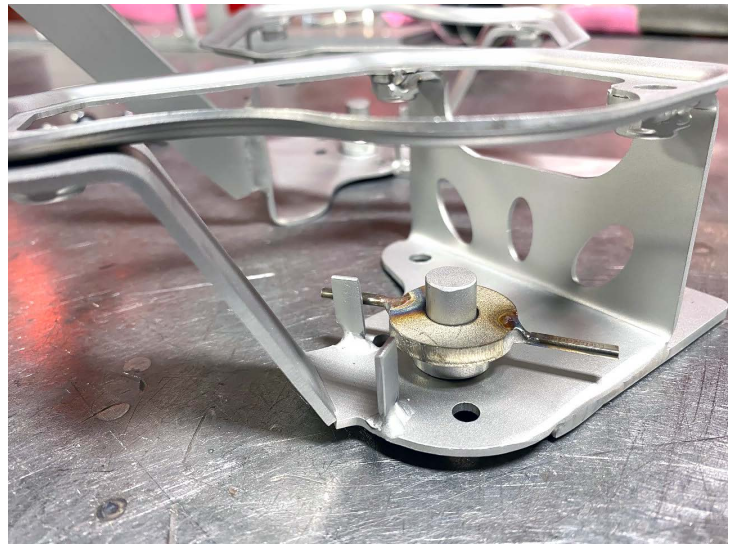
Step 12: Remove the factory valve spring and replace with included springs.



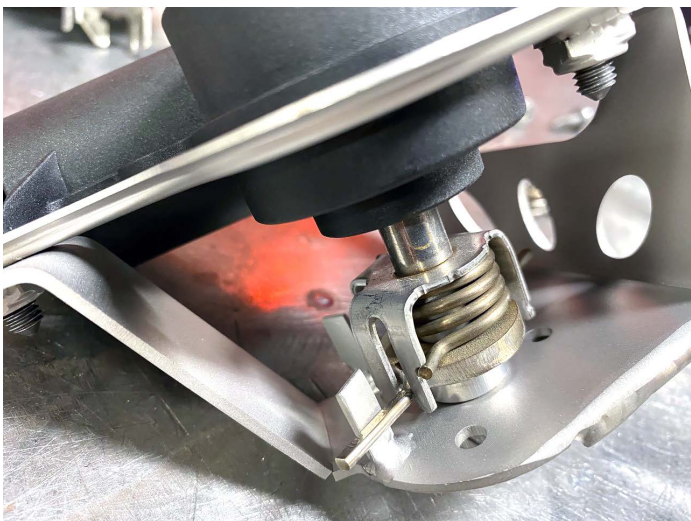
Step 13: Insert a .25 aluminum spacer on the supplied bracket rod.



Step 14: Insert the valve position piece on top of the washer as shown. (Old design shown)



Step 15: Install factory valve solenoids onto the SOUL brackets. Make sure all the bracket components are properly lined up and that the spring has tension.



Step 16: Using a e10 Torx bit, remove bolts from the cam actuator cover. On the left side, remove both on the cover. For the right side remove the top most bolt on the cover and the nut on the heat shield (14mm).



Step 17: Install the valve actuator and reinstall bolts using factory hardware (right side pictured). Reconnect the valve actuator connector.

Step 18: On the left side, start with the upper right bolt as it will make it easier to install the left lower bolt. Make sure to add the spacers on the underside of the bracket. When removing the bolts from the heat shield piece, make sure to hold it in place when reinstalling. Plug in the valve actuator connector when finished.



Step 19: On the right side carefully screw in the o2 sensor before installing the catalytic converter or cat bypass pipe.

Step 20: Place the turbo band clamps on the catalytic converter section to turbo connections and loosely install on car.





Step 21: Loosely install supplied bolts and washers on the hanging cat mounting brackets.

Step 22: Slide the supplied Torca clamps onto the center x-pipe. Prepare the turbo band clamp onto the other catalytic converter section.

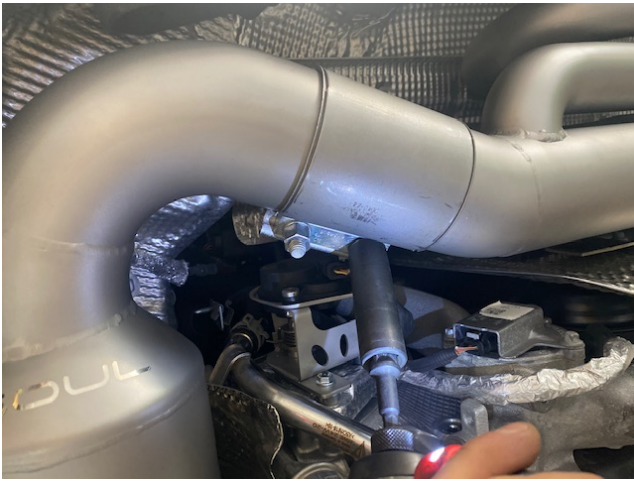


Step 23: With help from a friend or a pole jack, place the center exhaust onto the car and at the same time install the band clamp on the left catalytic converter section.



Step 24: Slide over the Torca clamp to connect the center exhaust portion to both cat sections. Leave hardware loose. Tighten the turbo band clamps on both sides using a 6mm allen socket





Step 25: Tighten bolts on the Torca clamps using a 15mm socket. Repeat on other side. Make sure the x-pipe is fully pressed up and situated against the back bracket.

Step 26: Tighten 13mm hardware on the cat mounting bracket on both sides.



Step 27: Secure SOUL exhaust to factory brackets using provided Mikalor clamps.

Step 28: Insert tip outlets on outlet pipe and tighten clamps using a 11mm socket. Be mindful of the alignment of the outlet to the tip opening.

At this point torque down all clamps - 45 ft-lbs minimum for Torca - 36-48 in-lbs for V bands.



You have now successfully completed the installation of your new SOUL exhaust components! Thank you for your business and if you have any questions during/after the installation please do not hesitate to call or email at the details below.

⚠ You may notice smoke and fumes coming from the system upon first starting up the vehicle. This is due to oils used in manufacturing and is not a problem. The smell will dissipate in a short period of time after the exhaust has reached normal operating temperature.

SOUL PERFORMANCE PRODUCTS

2300 Maryland Road
Willow Grove, PA 19090
(267) 818-3201
customerservice@soulpp.com