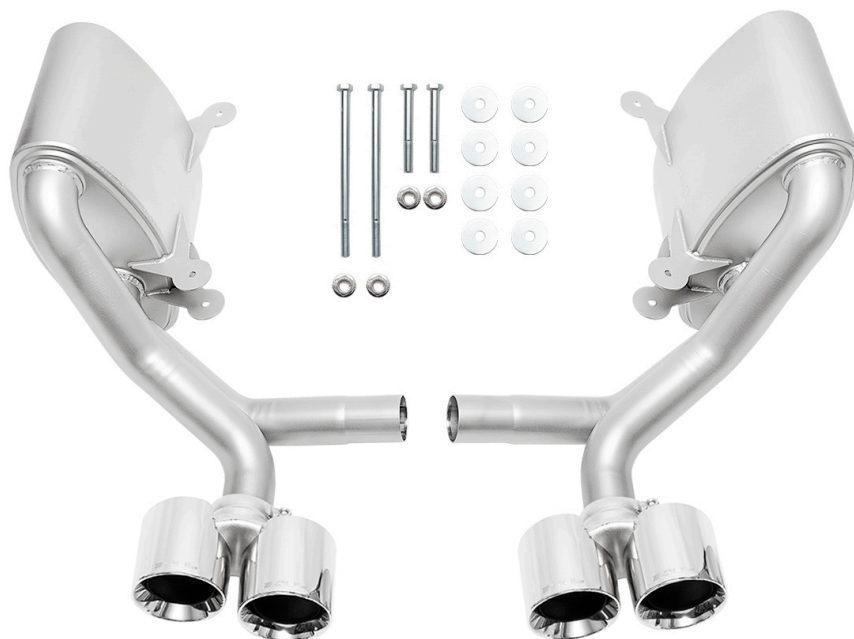


Disclaimer: This installation guide is intended to clarify the install of your new Soul Performance Products exhaust. Please take proper precautions and safety measures when working on your vehicle and perform this work at your own risk



Please ensure that all components listed below are accounted for before beginning installation:

Exhaust Hardware Included:

- (2) Mufflers
- (2) Tips of Choice
- (2) M8 x 140mm Bolts
- (2) M8 X 70mm Bolts
- (8) Large Washers
- (4) Lock Nuts

Packing Sign Off _____

Shipped on ____/____/____



Step 1: With the rear of the vehicle raised and supported safely, locate the 13mm exhaust tip mounting bolts and loosen. Slide the exhaust tips off of the vehicle.



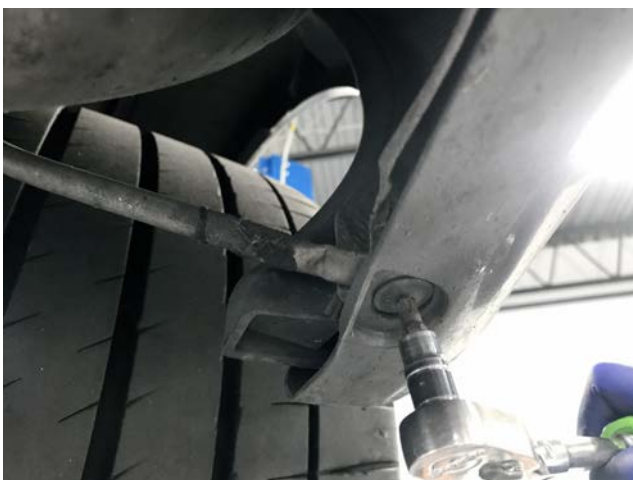
Step 2: Loosen 13mm sliding exhaust clamp bolts.



Step 3: Slide clamps off the mufflers and onto the catalytic converter sections.



Step 4: Remove 10mm bolt from bumper support rod.



Step 5: Remove T30 bolt from other side of the bumper support rod.



Step 6: Remove 3 x 13mm muffler support bracket nuts.



Step 8: Remove stock muffler brackets from the OEM mufflers.



Step 9: With included new hardware attach muffler bracket onto SOUL mufflers.



Step 10: Install new mufflers onto the vehicle.



Step 11: Reinstall sliding OEM clamps but do NOT tighten yet.





Step 12: Tighten new muffler bracket nuts.



Step 13: Tighten exhaust clamps.



Step 14: Reinstall the bumper support rod.



Step 15: Align exhaust tips and tighten.

Thank you for your business and if you have any questions during/after the installation please do not hesitate to call or email at the details below.

! You may find that after your first full heat cycle of the exhaust that you need to re-adjust the tip placement to your liking. Additionally, the tone and sound of your exhaust will likely change as the mufflers get broken in, roughly a thousand miles or so.

! You may notice smoke and fumes coming from the system upon first starting up the vehicle. This is due to oils used in manufacturing and is not a problem. The smell will dissipate in a short period of time after the exhaust has reached normal operating temperature.

SOUL PERFORMANCE PRODUCTS
(267) 818-3201 customerservice@soulpp.com

SOUL
PERFORMANCE PRODUCTS