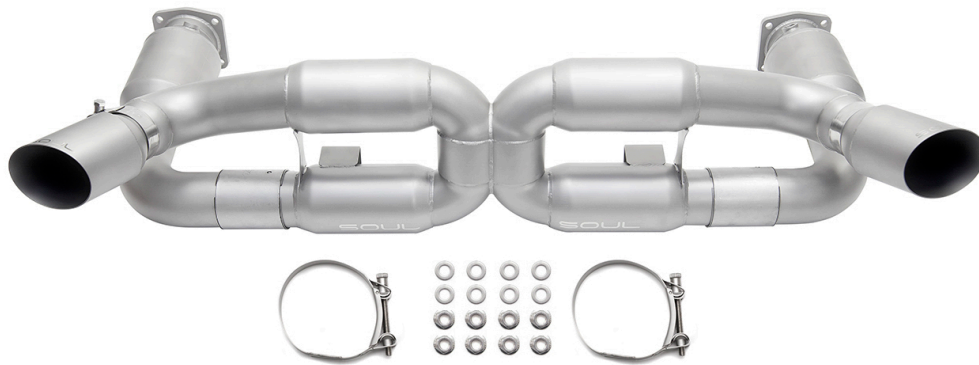


**Disclaimer:** This installation guide is intended to clarify the installation process of your new Soul Performance Products exhaust. Please take proper precautions and safety measures when working on your vehicle and perform this work at your own risk. We recommend removing the rear bumper before installation please contact us if you have any questions.



Please ensure that all components listed below are accounted for before beginning installation:

**INCLUDED COMPONENTS**

- o (1) X-Pipe Exhaust
- o (2) Sport Catalytic Converters
- o (2) Tips and clamps (if purchased)
- o (8) Flat Washers
- o (8) Locking Nuts
- o (2) Exhaust Couplers (Torca)

Packing Sign Off \_\_\_\_\_

Shipped on \_\_\_\_ / \_\_\_\_ / \_\_\_\_



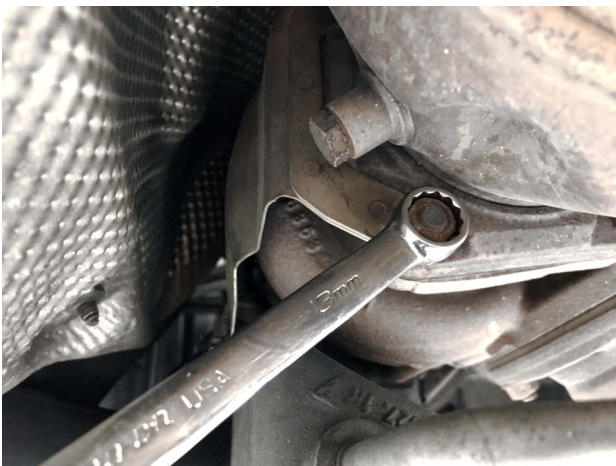
**Step 1:** Remove the rear bumper. Follow Porsche service manual instructions or any of the guides available online.



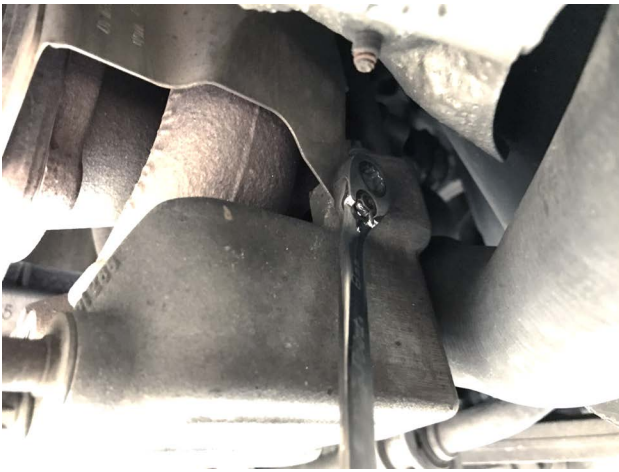
**Step 2:** Loosen and remove both OEM exhaust tips (13mm bolts).



**Step 3:** Remove the EGT sensors on each turbo using a 14mm wrench.



**Step 4:** Loosen and remove the nuts holding the exhaust to the turbochargers. (4 13mm nuts on each side)



**Step 5:** Loosen and remove turbocharger heat shields.



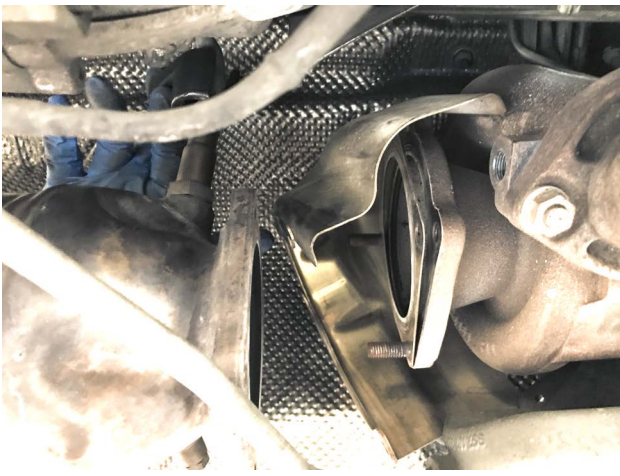
**Step 6:** Unbolt both OEM muffler band straps while supporting the muffler using M6 allen socket / extension.



**Step 7:** **CAREFULLY** lower exhaust slightly then remove all four O2 sensors.



**Step 8:** Slide muffler straps off the muffler bracket.



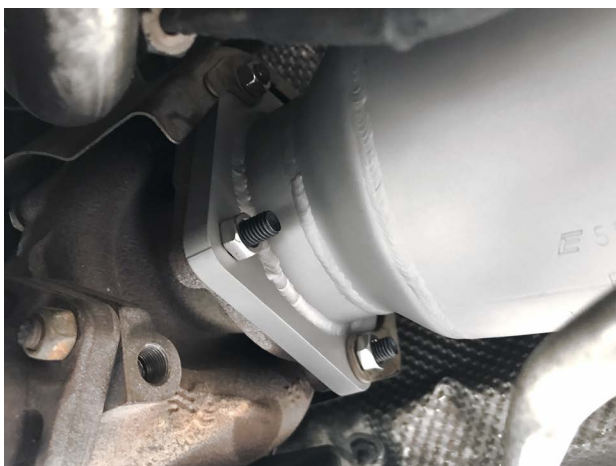
**Step 9:** Adjust turbo heat shield to be able to remove the exhaust down and out of the vehicle.



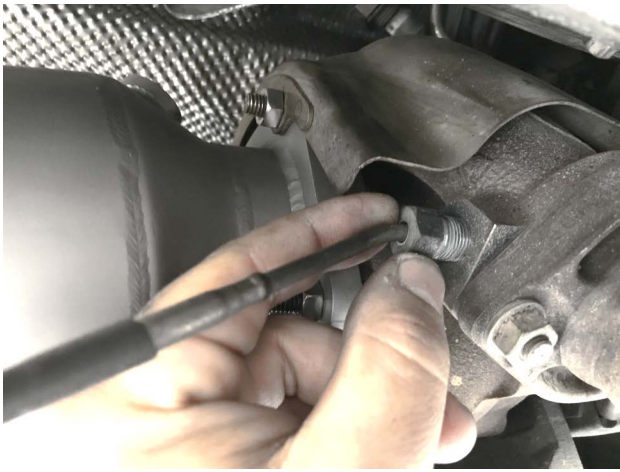
**Step 10:** Clean and reinstall OEM turbo gaskets if in good condition, or install new OEM gaskets.



**Step 11:** Position heat shield over the turbo flange and install new Sport Cat sections.



**Step 12:** Install new included nuts and washers and torque down on both sides.



**Step 13:** Reinstall EGT sensors on both turbos and torque them down.



**Step 14:** Reinstall heat shield bolts and tighten.



**Step 15:** Reinstall and tighten the O2 sensors.



**Step 16:** Slide exhaust couplers onto each exhaust end.



**Step 17:** Install x-pipe and exhaust hanger clamps. Use the exhaust couplers to support the x-pipe while you do this to make the installation easier. Tighten the exhaust straps.



**Step 18:** Tighten the exhaust couplers to seal the system.

**Step 19:** Reinstall the rear bumper



**Step 20:** Install and adjust exhaust tips with 13mm socket wrench.





Step 21: Double check all hardware is tight, then enjoy your new exhaust!



**BE SURE TO THOROUGHLY CLEAN YOUR NEW EXHAUST COMPONENTS TO REMOVE FINGERPRINTS BEFORE STARTING**

You have now successfully completed the installation of your new Soul Performance Products exhaust components! Thank you for your business and if you have any questions during/after the installation please do not hesitate to call or email at the details below.

 You may find that after your first full heat cycle of the exhaust that you need to re-adjust the tip placement to your liking. Additionally, the tone and sound of your exhaust will likely change as the mufflers get broken in, roughly a thousand miles or so.

 You may notice smoke and fumes coming from the system upon first starting up the vehicle. This is due to oils used in manufacturing and is not a problem. The smell will dissipate in a short period of time after the exhaust has reached normal operating temperature.

**SOUL PERFORMANCE PRODUCTS**

2300 Maryland Road | Suite B  
Willow Grove, PA 19090  
(267) 818-3201 | Office  
customerservice@soulpp.com

**SOUL**  
PERFORMANCE PRODUCTS