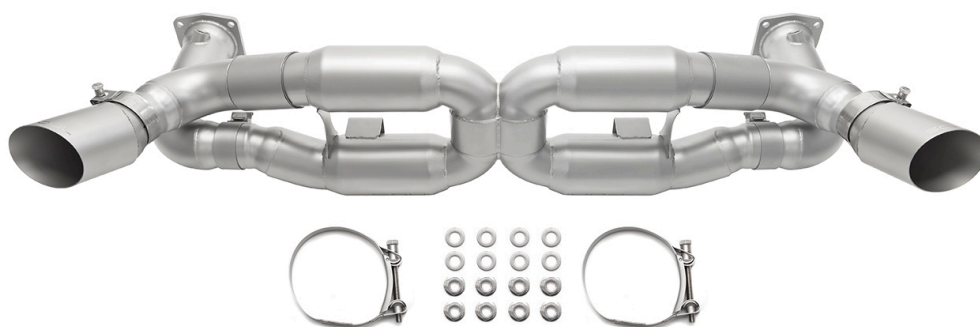


**Disclaimer:** This installation guide is intended to clarify the install of your new Soul Performance Products exhaust. **Please read this guide in full before beginning installation.** Please take proper precautions and safety measures when working on your vehicle and perform this work at your own risk



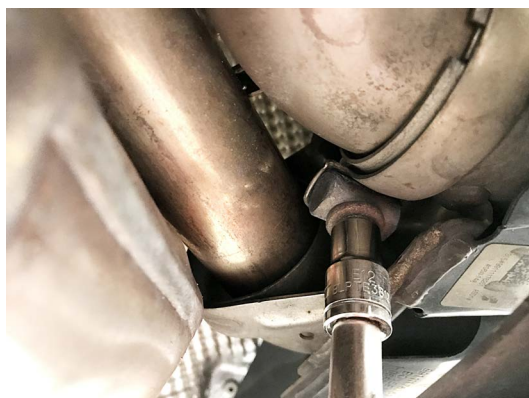
Please ensure that all components listed below are accounted for before beginning installation:

**INCLUDED COMPONENTS**

- o (8) Washers
- o (8) Locking Nuts
- o (2) 2.5" Accuseals
- o (2) Mikalor Clamps (if tips purchased)
- o (2) Custom Mikalor Clamps (for mounting)
- o (2) Torca Clamps (for tip sections)

Packing Sign Off \_\_\_\_\_

Shipped on \_\_\_\_ / \_\_\_\_ / \_\_\_\_



**Step 1:** With the car supported safely, locate and loosen the bolt clamp (E12mm) holding the exhaust tips, then remove the tips from the vehicle.



**Step 2:** Locate and **VERY CAREFULLY** remove the EGT sensors (14mm). If they bend or twist you will damage the ceramic in the sensor.

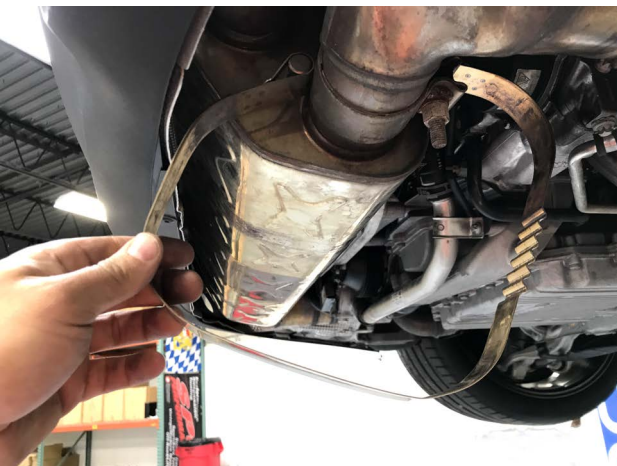


**Step 3:** Loosen 12mm nuts holding the turbo heat shields and catalytic converters to the turbo.

**Leave one nut on both sides loose to allow for play in the exhaust later when removing O2 sensors.**



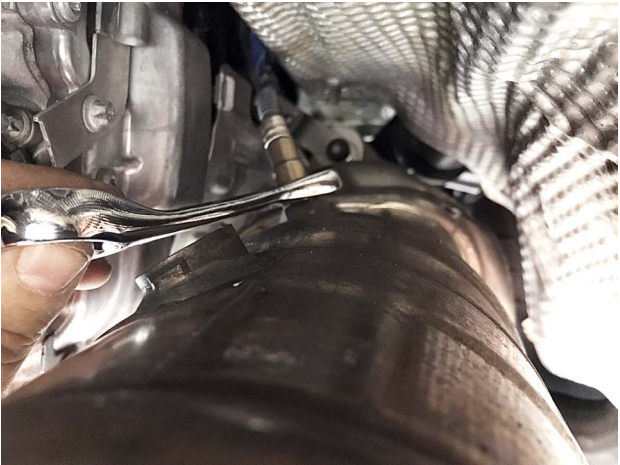
**Step 4:** Loosen the band clamp holding the muffler using a 6mm hex bit.



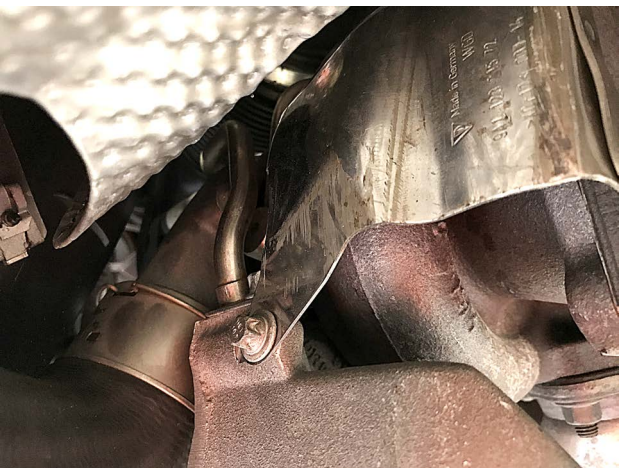
**Step 5:** At this point, removing the muffler band clamp may allow the system to droop. If you left a nut on either side of the factory catalytic converters - you can allow the system to droop to access the O2 sensors for removal. Alternatively, you can support the muffler with a transmission jack as you remove it.



**Step 6:** Remove secondary O2 Sensors (22mm).



**Step 7:** Remove both primary O2 sensors (22mm).



**Step 8:** Remove the final 8mm nuts holding the turbo heat shields on.



**Step 9:** At this time remove the final nuts holding the system onto the car, and remove the heat shields and OEM exhaust system from the vehicle. You will most likely have to use some force to remove it. Mind the space between the exhaust and bumper to prevent any possible damage.



**THE FACTORY SYSTEM IS HEAVY - IT'S BEST TO USE A TRANSMISSION JACK OR SECOND SET OF HANDS TO ASSIST IN REMOVING THE EXHAUST.**



At this point you can either install the entire exhaust in one piece and adjust once on the car - or follow our recommended procedure of installing each piece individually as follows:

**Step 10:** Inspect factory turbo gaskets. You may replace or reuse the OEM gaskets if they are in good condition.

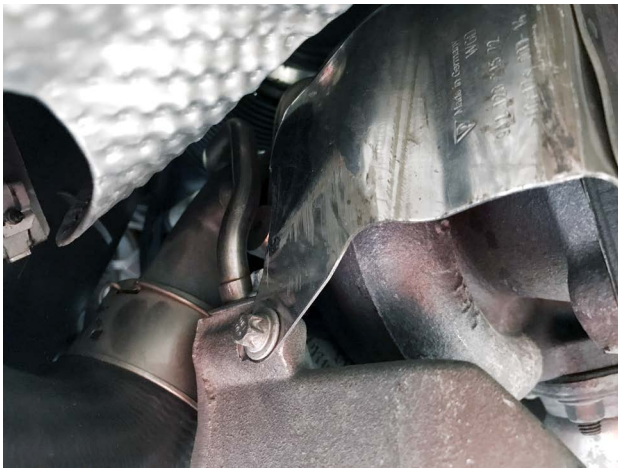
**Step 11:** Position the driver side Cat Bypass Pipe in place.



**Step 12:** Place the OEM turbo heat shield in the correct location.



**Step 13:** Using the included 13mm locking nuts and washers loosely install the first Cat Bypass Pipe to the turbo to allow the system to sag making o2 sensor installation easier.



**Step 15:** CAREFULLY hand screw in the EGT sensor then carefully tighten it down.

**Step 14:** Install 8mm turbo heat shield bolt back onto shield.



**Step 16:** Install the primary O2 sensor first. Torque to 37 - 44 ft-lb.



**Step 17:** Install the secondary O2 sensor. Torque to 37 - 44 ft-lb.



**Step 18:** Make sure the O2 sensor harness is back on the clip.



**Step 19:** With all sensors now installed, torque down the included 13mm locking nuts and washers on the turbos.

(Sport Catalytic Converters pictured)



**Step 20:** Slip on the provided 2.5" Accuseals onto the Competition X-Pipe.

**Step 21:** Lift and position Soul Competition X-Pipe with the Cat-Bypass Pipes in place.



**Step 22:** Use both of the provided Mikalor clamps to position and hold the Competition X-Pipe against the OEM bracket. Lightly tighten the clamps.

**Step 23:** Once both sides of the Catbypass Pipes are loosely installed, fully tighten down the 2.5" Accuseals.



**Step 24:** Once positioned correctly fully tighten the custom Mikalor clamps that were provided.

**Step 25:** Install tip outlet sections with Torca clamps onto X-Pipe and roughly position in place, tighten loosely to allow for adjustment.

**Step 26:** Slip on and adjust the exhaust tips to the position of your liking before finally tightening down tip outlets and tips.







**Pictured Left:** Newly installed Soul Performance Products Exhaust



**BE SURE TO THOROUGHLY CLEAN YOUR NEW EXHAUST COMPONENTS TO REMOVE FINGERPRINTS BEFORE STARTING**

You have now successfully completed the installation of your new Soul Performance Products exhaust components! Thank you for your business and if you have any questions during/after the installation please do not hesitate to call or email at the details below.

 You may find that after your first full heat cycle of the exhaust that you need to re-adjust the tip placement to your liking. Additionally, the tone and sound of your exhaust will likely change as the mufflers get broken in, roughly a thousand miles or so.

 You may notice smoke and fumes coming from the system upon first starting up the vehicle. This is due to oils used in manufacturing and is not a problem. The smell will dissipate in a short period of time after the exhaust has reached normal operating temperature.

**SOUL PERFORMANCE PRODUCTS**

2300 Maryland Road | Suite B  
Willow Grove, PA 19090  
(267) 818-3201 | Office  
customerservice@soulpp.com

**SOUL**  
PERFORMANCE PRODUCTS