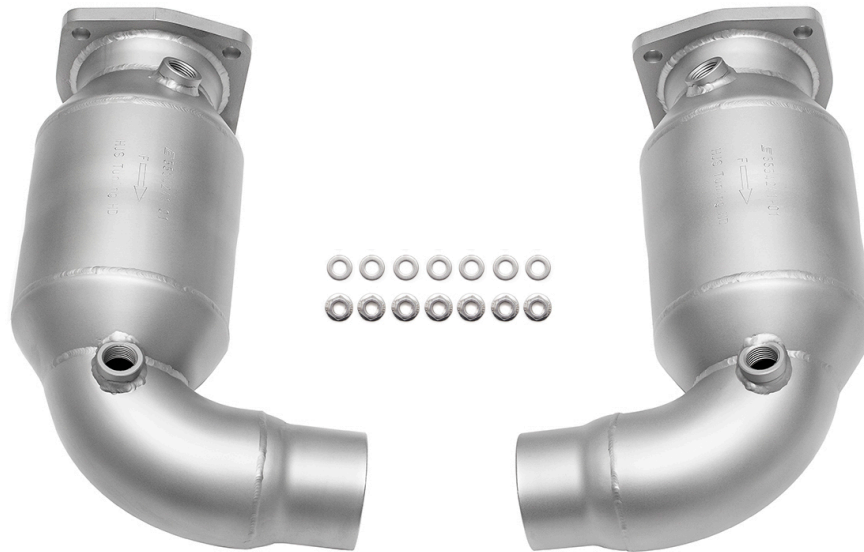


**Disclaimer:** This installation guide is intended to clarify the install of your new Soul Performance Products exhaust. Please take proper precautions and safety measures when working on your vehicle and perform this work at your own risk



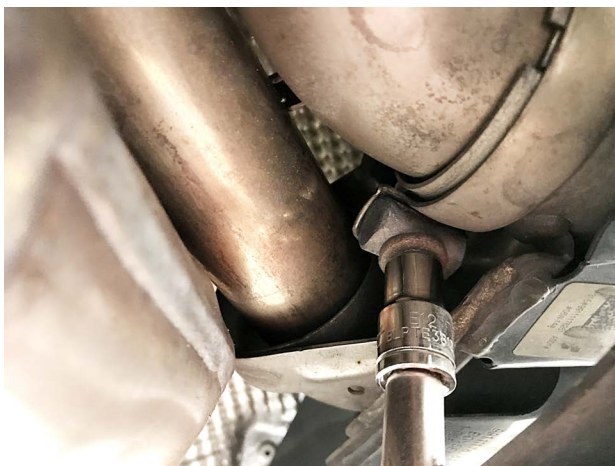
Please ensure that all components listed below are accounted for before beginning installation:

**INCLUDED COMPONENTS**

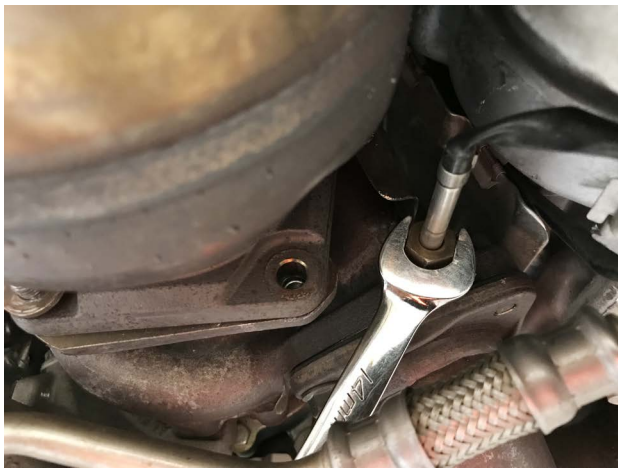
- (2) Sport Catalytic Converters (Left and Right)
- (8) M8 Locking Nuts
- (8) Washers

Packing Sign Off \_\_\_\_\_

Shipped on \_\_\_\_/\_\_\_\_/\_\_\_\_



**Step 1:** With the car supported safely, locate and loosen the bolt clamp (E12mm) holding the exhaust tips, then remove the tips from the vehicle.



**Step 2:** Locate and **VERY CAREFULLY** remove the EGT Sensor (14mm). If it bends or twists you will damage the ceramic in the sensor.



**Step 3:** Loosen 12mm nuts holding the turbo heat shield and catalytic converters to the turbo.

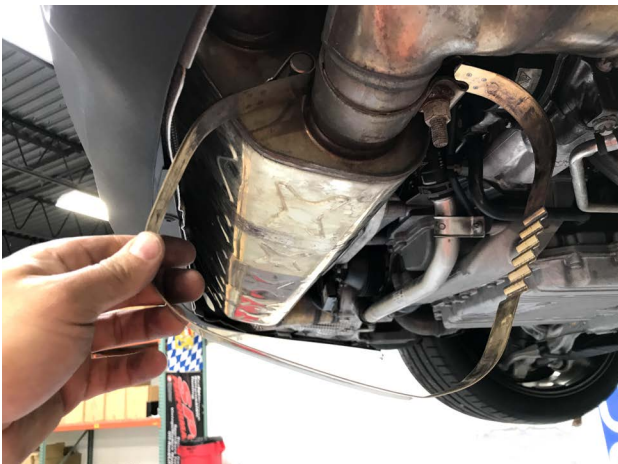
**Leave one nut on both sides loose to allow for play in the exhaust later when removing O2 sensors.**



**Step 4:** Loosen the band clamp holding the muffler using a 6mm hex bit.

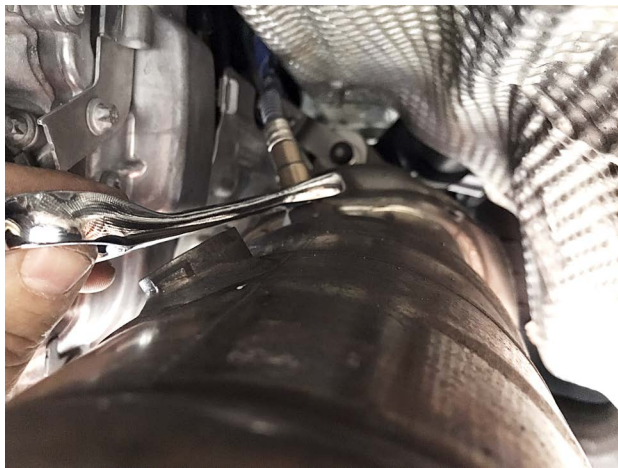


**Step 5:** At this point, removing the muffler band clamp may allow the system to droop. If you left a nut on either side of the factory catalytic converters - you can allow the system to droop to access the O2 sensors for removal. Alternatively, you can support the muffler with a transmission jack as you remove it.

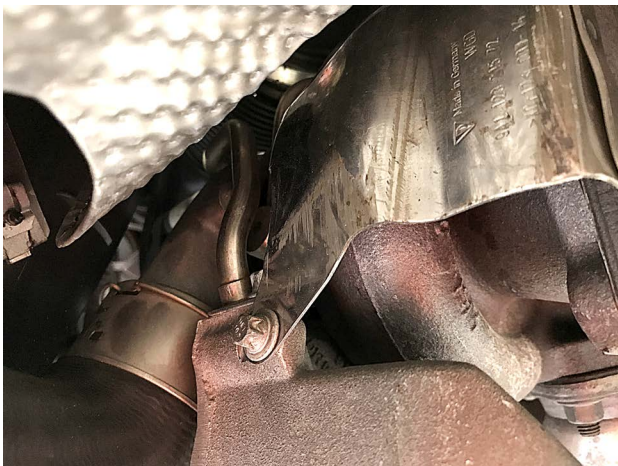




**Step 6:** Remove Secondary O2 Sensors (22mm).



**Step 7:** Remove both Primary O2 sensors (22mm).



**Step 8:** Remove the final 8mm nuts holding the turbo heat shields on.



**Step 9:** At this time remove the final nuts holding the system onto the car, and remove the heat shields and OEM exhaust system from the vehicle. You will most likely have to use some force to remove it. Mind the space between the exhaust and bumper to prevent any possible damage.



**THE FACTORY SYSTEM IS HEAVY - IT'S BEST TO USE A TRANSMISSION JACK OR SECOND SET OF HANDS TO ASSIST IN REMOVING THE EXHAUST.**



**Step 10:** Locate the OEM clamps holding the OEM catalytic converters. Loosen the clamp bolts with a 15mm socket and remove the OEM catalytic converters.

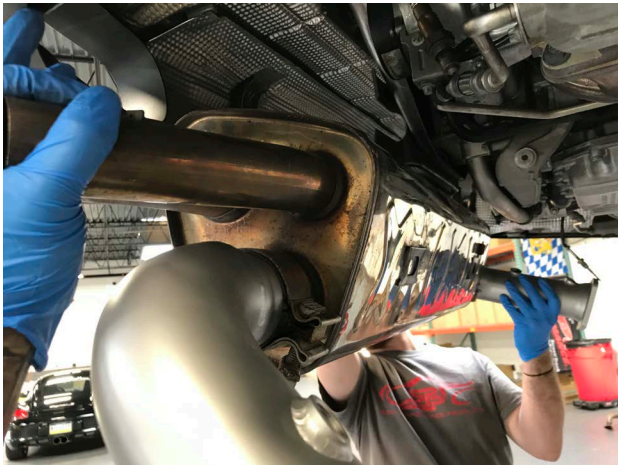


**Step 11:** Install the Soul Performance 991 Turbo Sport Catalytic Converters **tight but NOT fully torqued** - you will need to adjust once the exhaust assembly is installed back on the vehicle.

(Cat Bypass Pipes pictured)



**Step 12:** You may replace or reuse the OEM turbo gaskets if they are in good condition.



**Step 13:** Lift the OEM muffler with Sport Catalytic Converters installed and position the muffler in place while orienting the converters into the correct location for installation.

(Cat Bypass Pipes pictured)



**Step 14:** Place the OEM turbo heat shield in the correct location.



**Step 15:** Using the included 13mm locking nuts and washers loosely install the Cat Bypass Pipes to the turbo to allow the system to sag making o2 sensor installation easier.



**Step 16:** Install 8mm turbo heat shield bolt back onto shield.



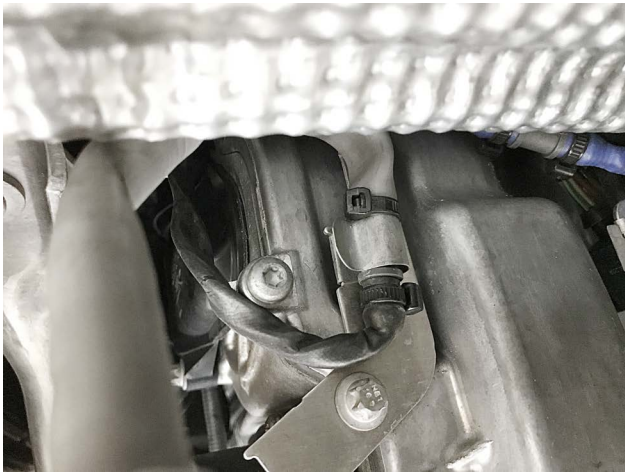
**Step 17:** CAREFULLY hand screw in the EGT sensors then carefully tighten them down.



**Step 18:** Install the Primary O2 Sensors first.



**Step 19:** Install the Secondary O2 Sensors.



**Step 20:** Make sure the O2 sensor harness is back on the clip



**Step 21:** Loop the the OEM band clamp back around the OEM muffler.



**Step 22:** With all sensors now installed, fully tighten and torque the included 13mm locking nuts and washers on the turbos.

**Step 23:** Adjust the OEM band clamp back into its original position and tighten it back down.



**Step 24:** Tighten down the OEM clamps holding the Cat Bypass Pipes to the muffler to 41 ft/lbs.

(Soul Performance Products Exhaust pictured)



**Step 25:** Slip on and adjust the tips onto the OEM muffler to your desired position. Tighten down the clamps for the tips.

You have now successfully completed the installation of your new Soul Performance Products exhaust components! Thank you for your business and if you have any questions during/after the installation please do not hesitate to call or email at the details below.

**⚠** You may find that after your first full heat cycle of the exhaust that you need to re-adjust the tip placement to your liking. Additionally, the tone and sound of your exhaust will likely change as the mufflers get broken in, roughly a thousand miles or so.

**⚠** You may notice smoke and fumes coming from the system upon first starting up the vehicle. This is due to oils used in manufacturing and is not a problem. The smell will dissipate in a short period of time after the exhaust has reached normal operating temperature.

**SOUL PERFORMANCE PRODUCTS**

2300 Maryland Road | Suite B  
Willow Grove, PA 19090  
(267) 818-3201 | Office  
customerservice@soulpp.com

**SOUL**  
PERFORMANCE PRODUCTS