



INSTALLATION INSTRUCTIONS

Multifunction Steering Wheel Paddle Shifter Upgrade

P/N PORPSHFT01



Thank you for purchasing our Paddle Shift Upgrade kit for Porsche “multifunction” steering wheels. Our paddle shifters are CNC machined from billet aluminum and are 100% made in USA.

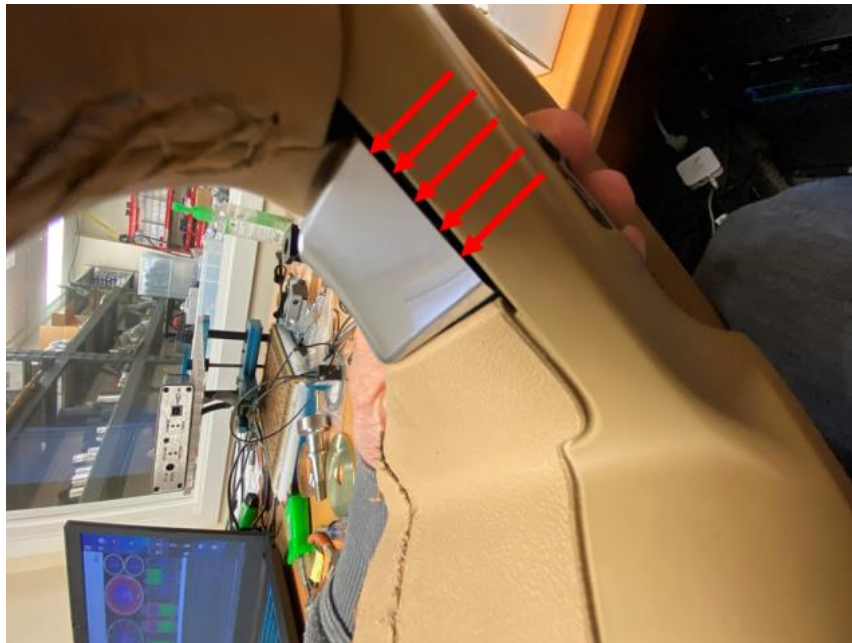
Please note that some minor Re-wiring is required to give the paddles Right=Upshift and Left=Downshift functionality.

To install these paddle shifters, the following tools are recommended (a hex wrench is provided):

- Soldering iron & electrical tape
- Mini-TORX driver bits
- Hex key (provided)
- Plastic trim removal tool

Installation steps are as follows:

1. Remove the back trim off the left and right shift paddles. We recommend doing this from below the steering wheel “spoke.” Gently pry the rear trim piece apart and remove as shown below. It is secured with plastic clips.



2. Remove the 2 torx bit screws from the right and left paddles:



3. Remove the battery positive terminal
4. Remove the steering wheel airbag. There is a hole at the bottom of the steering wheel. Inserting a screwdriver into this hole and pushing up against an internal spring will pop the airbag assembly out. It is not necessary to disconnect the airbag wire.

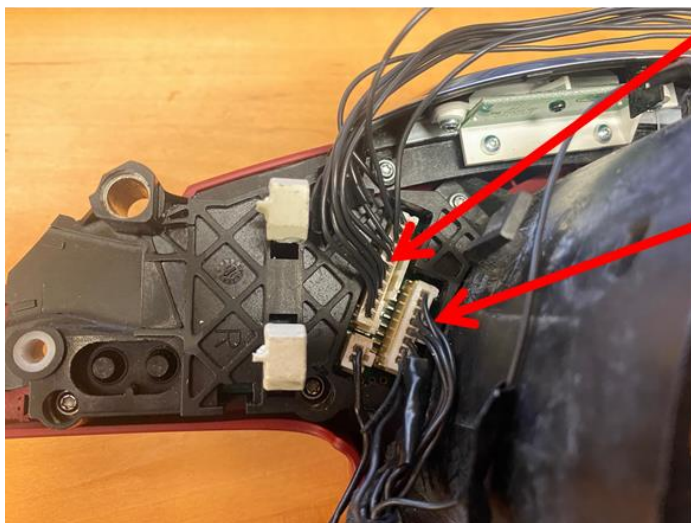


5. Remove the front plastic trim. We recommend using a plastic trim removal tool/wedge. This piece is usually secured very tightly if it has never been removed before:



6. Locate and unplug the right side connectors. Please note, there are 3 types of “plug 2” depending on the model/features of your steering wheel (4, 7, and 11 wire versions).

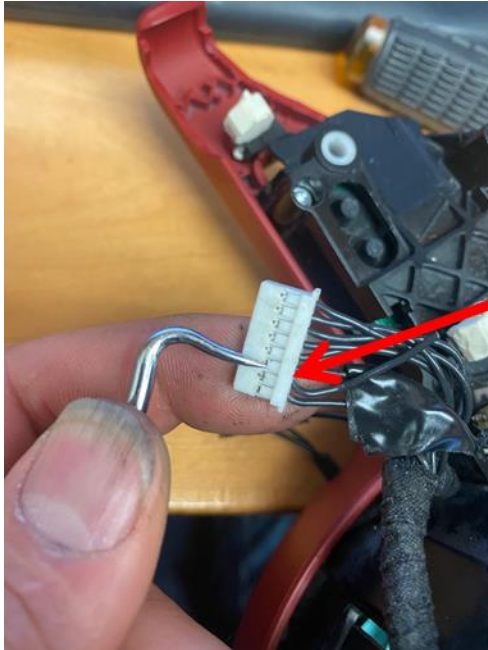
Right side connectors



Plug 2:
type A: 11 pin
type B: 7 pin
type C: 4 pin

Plug 1: 8 pin

7. As shown below. Using a pick tool, carefully lift up on the plastic clip and remove pin 6. Then remove pin 7, and plug into the pin 6 location. It is a good idea to label pin 6 wire as it will be used in the next step.



Remove pin 6, then remove pin 7 and Plug into pin 6 location.

8. Unplug the following pin from Plug 2:
 - Plug 2 Type A 11 pin: unplug pin 6
 - Plug 2 Type B 7 pin: unplug pin 6
 - Plug 2 Type C 4 pin: unplug pin 3
9. Combine pin 6 from Plug 1, with the pin disconnected from Plug 2 by soldering or crimping wires together.
10. Reassemble in reverse order. Note that the back silver cover is not re-installed as the shifters bolt in place of that cover.

Have any questions?

Please call us at 484-756-1777 or email at support@RR-Racing.com